

WEATHER

	Min.	Max.	Precip.
Wednesday, Jan. 19	23	31	0.00
Thursday, Jan. 20	20	26	0.25
Friday, Jan. 21	26	32	Trace
Saturday, Jan. 22	22	29	Trace
Sunday, Jan. 23	23	40	0.07
Monday, Jan. 24	16	18	0.01
Tuesday, Jan. 25	10	35	0.01

By H. K. L.

ONE HUNDRED-SECOND YEAR—No. 32

14 Pages This Week

THE CHELSEA STANDARD, THURSDAY, JANUARY 27, 1972 15c per copy

SUBSCRIPTION: \$4.00 PER YEAR

The Chelsea Standard

QUOTE

"They say that knowledge is power. I used to think so, but I now know that they meant money. Every guinea is a philosopher's stone."

—Byron.

Hitchingham Dies Friday in Auto Crash

A Chelsea man was killed Friday, Jan. 21, when the pickup truck he was driving left the road and struck two trees.

Dead is William P. Hitchingham, 49, Chelsea-Dexter Rd. He was killed when his vehicle veered off the road and struck a tree head-on, then bounced broadside into a second tree, Washtenaw county sheriff's deputies said.

Hitchingham was eastbound on I-94 when the accident occurred three miles west of Ann Arbor, east of Zeeb Rd., at approximately 5:30 p.m.

Sheriff's deputies said Hitchingham was killed instantly from the impact, but were uncertain what caused the truck to leave the road.

According to sheriff's deputies, Hitchingham apparently was pursuing another vehicle at speeds estimated from 85-100 miles per hour.

Michigan State police arrested a driver about one-half hour later, and deputies are investigating the possibility that he was the man Hitchingham was reportedly chasing.

Washtenaw county sheriff's deputies are still investigating the accident.

Karate Class Beginning Next Tuesday

Tae Kwon Do karate course, sponsored by the Chelsea Recreation Council, will hold its first class Feb. 1.

The class will meet in North Elementary school gymnasium each Tuesday from 7 to 9 p.m.

Family participation in the karate class is a prime objective, Bruce Galbraith, council member said. Basic fee for the course is \$10 per month per person. The second person in the family would also pay the \$10 fee, the third family member would pay \$5, and each member after that would be able to take the course free.

Instructor James Yu will teach the class on a year-round basis if sufficient interest is shown. Yu said that payment of the monthly fee in Chelsea enables students to attend classes at no additional charge in Ann Arbor, Saline or other communities where the course is offered.

Elements of self-defense are taught, as well as the building of mental and physical strength, Yu said.

(Continued on page six)

M. Reinhardt Recovering from Snowmobile Crash

Malcolm Reinhardt, Joslin Lake Rd., is recovering at St. Joseph Mercy Hospital from injuries received Jan. 14 in a snowmobile accident.

Reinhardt was operating the vehicle at an airport run when the accident occurred.

He suffered head injuries and a skull fracture and underwent seven hours of surgery Jan. 19. He was removed from the hospital's intensive care unit Sunday.

Reinhardt's room number is 329.

Maj. R. Toney Decorated with Bronze Star

U. S. Air Force Major Robert L. Toney, son of Mrs. Mary Haselwerdt of 884 S. Steinbach Rd., Chelsea, has been decorated with the Bronze Star Medal for meritorious service while engaged in military operations against Viet Cong forces in Vietnam.

Major Toney was presented the medal at Zweibrücken AFB, Germany, where he now serves as base comptroller, 86th Combat Support Group. The 86th is part of the U.S. Air Forces in Europe, America's overseas air arm assigned to NATO.

A 1950 graduate of Chelsea High school, he received his BA degree in business administration in 1954 from Michigan State University and his MS degree in personnel administration in 1966 from George Washington University, Washington, D.C. He is a member of Theta Xi. The major was commissioned upon completion of the Air Force Reserve Officers Training Corps program.

His wife, Carolyn, is the daughter of Mr. and Mrs. H. Carl Bates of 2700 Parker Rd., Dexter.

Girls Gymnastic Class, Boy's Basketball Exchange Schools

Transfer of the gymnastics equipment from Beach school to Chelsea High school has necessitated a change in meeting places for the girls' gymnastic class and boys' basketball.

Boys' basketball will now meet at Beach school and girls' gymnastics at the high school. Meeting times are the same—from 9 to 11 a.m.

Bank Names New Directors At Annual Meet

Gen. Dwight Beach and Robert L. Daniels were elected as directors of Chelsea State Bank Tuesday afternoon at the annual stockholders meeting.

Gen. Beach was selected by former President Lyndon Johnson as commander-in-chief of the United States Army of the Pacific in 1966. The retired four-star general is a native of Chelsea. He is a West Point graduate and has served with the Army in Australia, New Guinea, the Philippines and Japan. He is now retired and resides at 11350 Jackson Rd.

Daniels is also a native of Chelsea and is president of the Chelsea Lumber Co. He is a Chelsea High school and University of Michigan graduate. Daniels is active in numerous civic groups serving as past-president of Kiwanis Club, and a participant in Boy Scouting and recreational activities.

Other members of the Board of Directors are Paul E. Mann, Howard S. Holmes, Dudley K. Holmes, John P. Keusch, Jr., W. Merkel, Paul G. Schaeble, Jr., and Paul G. Schaeble, Jr. Paul G. Schaeble, Jr., vice-president and cashier.

JV Cagers Lose to Milan, Defeat Dexter

Chelsea junior varsity cagers dropped a game on Friday, but came back hustling Saturday to record a win.

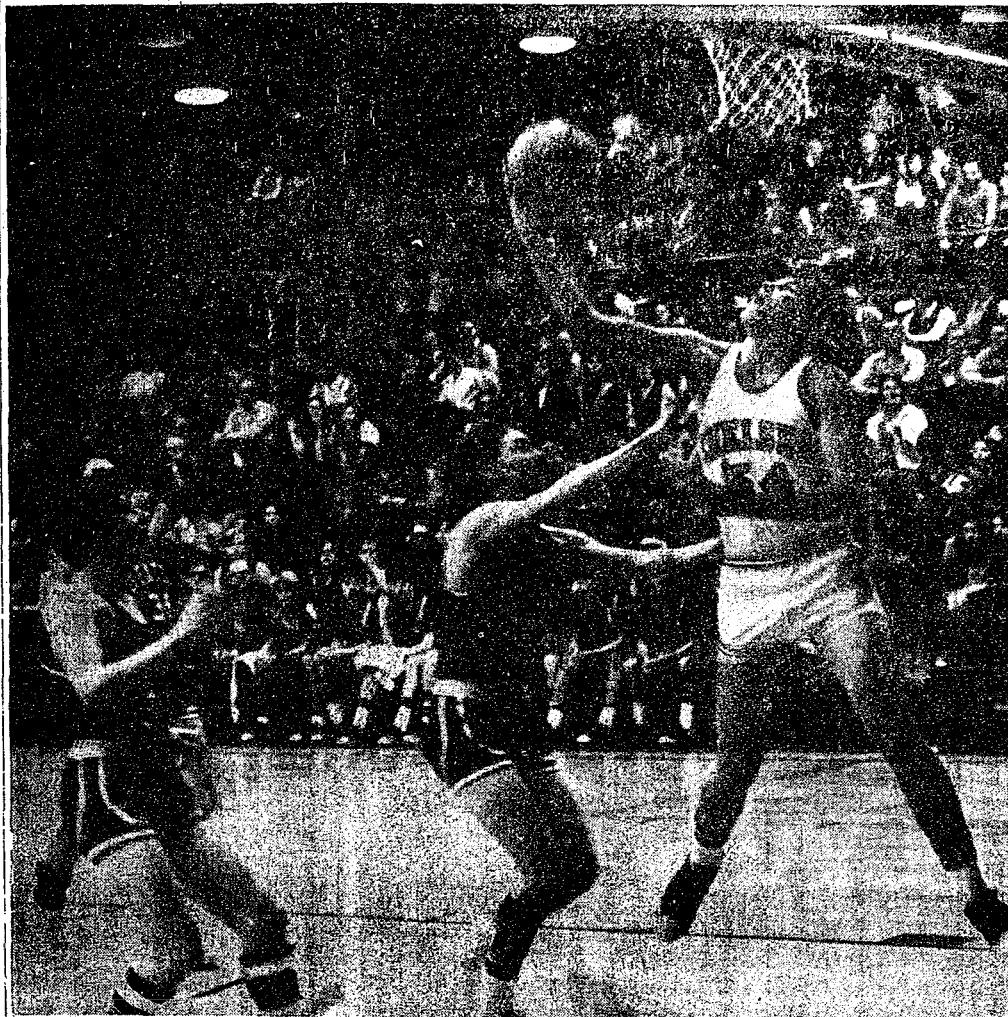
The Chelsea squad was outplayed from start to finish as Milan defeated the Bulldogs, 70-37.

Milan jumped to a first quarter lead with 17 points to Chelsea's 12. By the end of the first half, the Bulldogs found themselves behind by 17 points, managing to score only eight in the second quarter.

Chelsea failed to muster a scoring drive in the second half, with Milan outscoring the Bulldogs, 33-17.

Top Chelsea scorers were Jeff Sprague with eight points, John Houle and Ron Kiel with six each and Tim Treado, five.

Things looked better for Chelsea Saturday night as they chalked up a win against Dexter, 64-



TOUGH SHOT: Jeff Schmidt hooks one in for the Bulldogs while Dexter's Al Hosler attempts to halt the scorer. In the background are Gary Winchester (left) and Frank Gucker.

Wrestlers Win Over Jackson, Stockbridge

Chelsea wrestlers recorded two wins, defeating Stockbridge and Jackson Northwest, despite problems caused by many regular matmen out of action with the flu.

The first victory was handed to Stockbridge, Jan. 13, by a score of 36-14. Stockbridge wrestlers kept the match close until a win by captain Larry Jones at 132 pounds opened the way for a Bulldog lead.

Sam Trachet helped Chelsea in this right direction with a pin victory at 311. At 104 pounds, freshman Dave Keiser lost with a pin at 3:44. Mark Montange, wrestling at 112 pounds, suffered his first defeat in a 5-3 decision. At 119 pounds, Dale Poertner got Chelsea on the winning track with a 9-5 decision.

With the score tied, Keith Kargel came up with four points in the third period to gain a 4-4 draw. Jones added a 16-0 decision, and at 133 pounds, Tim Lancaster scored a 7-1 win.

Daryl West picked up a 5-1 decision at 145 pounds and Doug McDonald scored a 4-2 decision at 155 pounds. Jon Schenk then lost a 6-3 decision and Randy Seitz and Steve Worden picked up pin victories at 165 and heavyweight, respectively.

Despite the win, coach Richard Bareis said the team looked tired and performed slowly. He attributed most of this to heavy wrestling schedule and the flu.

In the Jackson Northwest match, however, Bareis said the team was much more aggressive and moved with more speed. The Bulldogs had little trouble defeating Northwest, handing them a 31-18 loss.

Sam Trachet was defeated by a

(Continued on page three)

Frozen Water Pipe Causes School Closing

Beach Middle school students may have thought it was an unexpected one-day vacation from school, but for the maintenance staff the Monday, Jan. 27 heating system failure turned out to be a lot of problems.

It all started when a valve controlling the automatic fire sprinkler system froze, breaking a three-inch water line and releasing almost three feet of water into the boiler room.

The flood submerged nine motors, all controlling the heating mechanism, plus the sump pumps which normally would have drained an influx of water.

The malfunction was discovered by Chelsea police during their routine check of the building about 8:30 a.m. Monday. They contacted Chelsea schools business manager Fred Mills, who called upon the Chelsea village administration department for help.

The village crew shut off the water main and used auxiliary pumps to drain the boiler room.

(Continued on page three)

Youth Symphony Concert Scheduled Sunday Afternoon

A concert by the Michigan Youth Symphony will be Jan. 30, at 3 p.m. in Chelsea High school auditorium.

The concert is sponsored by the Chelsea High school band and proceeds will be used for scholarships to attend band camps and for other band activities.

Tickets may be purchased from any band member, or at Strieter's Men's Wear, Foster's Men's Wear and Chelsea Drug.

Uniforms Issued for Hockey Teams

After waiting weeks for a solid freeze, the Chelsea District Hockey Association (CDHA) finally saw some skating action Tuesday, Owen Loasby, one of CDHA's organizers said.

The CDHA teams had their first practice session that day in preparation for actual games in several weeks.

Loasby said uniforms were issued to the players Saturday.

Team sponsors for the first season of the CDHA are Chelsea Medical Center, Chelsea Lumber, Ann Arbor Federal Savings, Gateway Sports Centre and A. D. Mayer Agency.

Loasby said that due to lack of teams, the A. D. Mayer Agency has relinquished their sponsorship, but is continuing its full sponsorship fee for the remainder of the season.

"CDHA is most grateful for this gesture," Loasby said, "and is looking forward to A. D. Mayer's sponsorship next year."

Donations are still needed for the association, he added, and about 40 or 50 letters have been sent to area businesses requesting financial support.

Businesses donating \$25 or more will be recognized with the name of the business appearing on the boards at the ice rink, Loasby said.

Missionaries To Speak at Local Church

Chelsea First Assembly of God church will host missionaries recently returned from service in the Philippines, on Sunday, Jan. 30, the Rev. T. B. Thodeson, pastor said.

The Rev. and Mrs. Kenneth McComber will present a progress report of the National Workers Training program of the Assemblies of God in the Philippines during morning worship services at 9:45 and 11 a.m.

The Rev. McComber and his wife, Margaret, are veteran missionaries with 22 years of service. They have participated in missionary work of almost every phase in the Philippines for the past 11 years. The Rev. McCom-

(Continued on page three)

CHS To Host Basketball Tournaments

Chelsea High school has been chosen to host the district and township basketball tournaments March, Dick Lapanski, Chelsea High school athletic director, announced Friday.

Chelsea was among 133 Michigan high schools chosen for the district tournaments and 28 schools chosen to host the regionals.

The district tournament will begin Feb. 29, with games also played March 2 and finals competition March 4. Competing for the district title will be teams from Brighton, Chelsea, Dexter, Hartland and Pinckney.

The regionals are slated for March 7, 9 and 11 with competing teams determined by the district winners.

This is the first time in several years that Chelsea has hosted the tournaments, Lapanski said.

Schools are chosen by the Michigan High School Athletic Association on the basis of facilities, seating capacity and location.

Lapanski said the tournaments are held at no expense to the host school. The state provides partial reimbursement to the school and Chelsea will receive a percentage of the gate receipts, he said.

(Continued on page five)

Cagers Defeat Milan, Dexter To Stay in Race

Travel to Saline Friday Evening Hoping for Share of First Place

Chelsea Bulldogs basketball team hosted the Milan Big Reds Friday night and sent the Milan team home with a 55-48 loss.

The game was loosely played, Coach Chuck Kelley said, and neither team was able to carry out a consistent offensive threat.

Chelsea took a 12-9 first quarter lead on the strength of the rebounding efforts of Jeff Schmidt and Jeff Daniels. Getting a second and third chance at the basket proved a real advantage as both teams shot poorly.

In the second period, Ron Sweeney, aided by Schmidt, scored 12 of Chelsea's 16 points in the period. After missing last week's game due to illness, Sweeney regained his touch to lead the Bulldogs to a 28-21 half-time lead.

The second half was a repeat of the first as Chelsea slowly pulled away, with Milan again narrowing the gap. Schmidt and Sweeney kept the Bulldogs in the lead, scoring 18 of Chelsea's 27 points in the second half. Daniels and Rick Miller provided help on the boards, as Todd Sprague and Wayne Welton continued to control the offensive game.

Joe Himelich led Milan in scoring with 12 points and Stanley Joplin chalked up nine. Chelsea's leaders were Schmidt and Sweeney with 18 points each. Schmidt and Daniels led in the rebounding department with 15 and 14, respectively.

Chelsea completely controlled the last quarter as they outscored Dexter, 23-10, to wrap up their seventh victory against two losses.

Schmidt and Daniels again led the rebounding as they collected 16 and 10, respectively.

With Saline's overtime victory over Lincoln, Chelsea now shares second place with Ypsilanti Lincoln, one game behind league-leading Saline. The Bulldogs travel to Saline Friday, hoping to grab a share of first place before they return home to take on Manchester Saturday night.

Radio Assoc. Emergency Test Slated

Chelsea will be the scene of the Huron Valley Amateur Radio Association of Ann Arbor simulated emergency test Jan. 30, Terry Babenko, Washtenaw county emergency co-ordinator announced Monday.

The nation-wide drill will test the capability of various emergency communications groups to establish working communications during an emergency.

Organizations participating in the test will be the Amateur Radio Emergency Corp., Chelsea Civil Defense and local citizen band communication groups.

During the testing, an amateur radio communications station, consisting of single side band and two-way FM equipment, will be set up at the Chelsea police station. Messages sent from participants will be relayed from the station.

(Continued on page five)

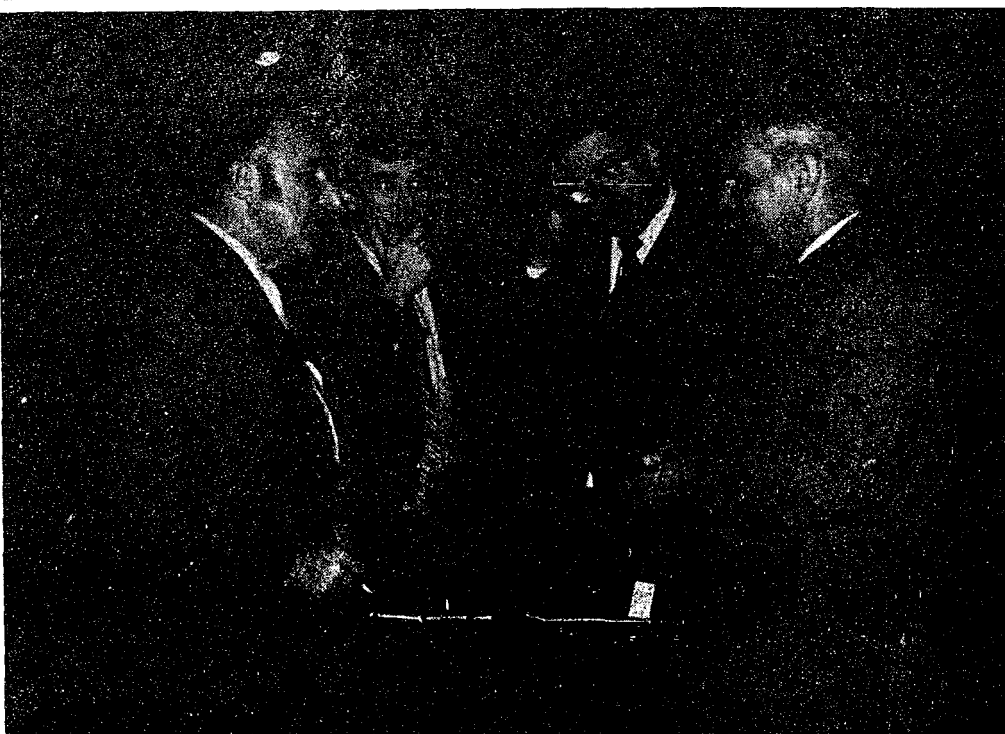
Chelsea Lumber Expanding Office, Storage Facilities

Chelsea Lumber Co. is making room for more products with the construction of a 50' x 90' storage shed.

The new building will provide 4,500 square feet of additional space, according to company president Robert Daniels, and will enable Chelsea Lumber to expand its lines of products and stock more goods for its customers.

Daniels said the shed will enable the company to increase its supply of kitchen cabinets, windows and increase its inventory of paneling by about 50 percent.

In addition to increased storage area, the company is also adding more office space to its existing facilities.



DISCUSS PLANNING: William Bott, left, manager for the Ann Arbor Chamber of Commerce, discusses problems concerning Chelsea's planning and zoning with, from left, Charles Cox, Kiwanis Club program chairman, Jerry Lutz, visiting Ann Arbor Kiwanian, and Superintendent of Schools Charles S. Cameron.

Chamber of Commerce Exec Urges Long-Range Planning

William Bott, manager of Ann Arbor Chamber of Commerce, urged long-range planning and community co-operation in meeting the problems of urban development in the Washtenaw county area.

Bott spoke to the Chelsea Kiwanis Club Monday evening and discussed land utilization in the county and its effect on Chelsea.

Bott, who is also involved on a state level with the Chamber of Commerce, discussed Ann Arbor's newly adopted "no growth" policy which prohibits the building of

residential homes within the city of Ann Arbor.

Bott said this policy could have a strong effect on Chelsea since home builders will seek outlying towns such as Chelsea, in which to live.

He feels that these communities should develop a long-range zoning and growth plan to insure favorable growth and prevent potential problems such as water shortages and sewage disposal.

Some time ago the Chelsea Planning Committee drew up a report at a cost of \$30,000 containing information about the

growth of Chelsea, including aspects such as taxation, manufacturing development and zoning.

Bott said reports like this could be a valuable aid to developing the potential of Chelsea if community government and organizations act on its recommendations and plans.

He said co-operation between communities is an excellent method of co-ordinating growth and also suggested that the planning commission report be readily available to the public to acquaint them with aspects of community growth.



BOUND FOR TURKEY: Maj. and Mrs. Robert M. Hall and their two daughters will leave Friday for Turkey where Hall will be working with the U. S. Air Force hospital unit. Mrs. Hall is the former Diane Holmes, daughter of Mr. and Mrs. Dudley Holmes, 146 E. Middle. The Hall's two

daughters are Sarah, 3, and Allison, nine months. Hall is a radiologist and will be stationed in Ankara, Turkey's capital city, for two years. He recently completed two weeks of training for his duties in Turkey at Wichita Falls, Tex.



Washington Report by Congressman MARVIN L. ESCH

One of the most successful agencies within the government in meeting the needs of the people, particularly those in developing countries, has been the Peace Corps. Yet today the Peace Corps is threatened with becoming a victim of the foreign aid debate. Peace Corps operations in the current Congress.

The Nixon Administration originally requested \$82 million for fiscal year ending June 30. Both the House and the Senate authorized \$77.2 million, but the House appropriated only \$68 million and the Senate in its uprising against foreign aid took no final action at all on the appropriations measure which includes monies for the Peace Corps.

The Congress did adopt a continuing resolution early in December which provides for a temporary \$72 million budget. The final figure is still to be worked out by conference committee, but drastic cuts under the previous year's budget level could result in termination of positions affecting thousands of volunteers.

I cannot agree with those who argue that we are justified in emasculating this important agency. The Peace Corps, since its inception 10 years ago, has clearly been a positive factor in American foreign policy. In describing it on the floor of the United States Senate, Senator Barry Goldwater, once commented, "I think the Peace Corps is the best thing we have going in the field of foreign relations." I would concur with that statement. Dollar

for dollar there are few government programs with the pay-off ability of the Peace Corps.

Over the years, the Peace Corps has moved in many new directions. As it starts its second decade, it is under the Action Program that Congress created in July of last year. The goals are unchanged—to help promote world peace and friendship, to help peoples of undeveloped countries meet their needs for trained manpower, to help promote mutual understanding between peoples of the United States and the developing nations. Approximately 60,000 Americans have served as volunteers.

Recently most countries have been requesting volunteers with specific skills and experience to meet changing needs. The Peace Corps responded with a "new directions" program to attract people of all ages and from all walks of life. Most persons in discussions of the Peace Corps think only in terms of the young person as the volunteer, but the volunteers we have include a broad range of skilled and older workers who go overseas as plumbers, farmers, carpenters and a great variety of other occupations.

This is a crucial time in the development of foreign policy objectives for the United States. In our efforts to correct past foreign policy mistakes, we must make sure that we do not destroy the most effective program of development assistance our nation has. As the Congress gives final consideration to foreign aid appropriations it is vital that the Peace Corps receive full support and I will be fighting for it in the days ahead.

Howell Livestock Auction

The Wise Owl Says Ship to Howell
SALE EVERY MONDAY, 2 p.m.
Phone 546-2470, Bim Franklin
Mason 677-8941

Market Report for Jan. 24

CATTLE—

Good to Choice Steers, \$35 to \$36.50
Good to Choice Heifers, \$30 to \$32
Fed Holstein Steers, \$23 to \$32.60
UT-Std., \$27 and down.

COWS—

Heifer Cows, \$25 to \$27
TH-Commercial, \$22.50 to \$25.25
Canner Cows, \$20 to \$23.50
Fat Beef Cows, \$20 to \$23

BULLS—

Heavy Bologna, \$28 to \$30
Light & Common, \$26 and down.

CALVES—

Prime, \$50 to \$55
Good-Choice, \$40 to \$45
Heavy Bologna, \$28 to \$30
Cull & Med., \$30 to \$40

FEDERS—

800-900 lb. Good to Choice Heifers, \$28 to \$30
400-700 lb. Good to Choice Steers, \$20 to \$25
800-900 lb. Holstein Steers, \$20 to \$25
500-800 lb. Holstein Steers, \$27 to \$30
Common-Med., \$26 and down.

SHEEP—

Shorn Slaughter Lambs:
Choice-Prime, \$29 to \$30.50
Good-Utility, \$26 to \$29
Wooled Slaughter Lambs:
Choice-Prime, \$27 to \$30
Good-Utility, \$24 to \$27
Slaughter Ewes, \$5 to \$10
Feeder Lambs, all weights, \$26 to \$28

HOGS—

200-250 lb. No. 1, \$27.50 to \$28.50
200-240 lb. No. 2, \$25 to \$27.50
240 lb. and up, \$24 to \$25
Light Hogs, \$24 and down.

SEALS—

Prime Light, \$29 to \$32.50
200-250 lb. \$22.50 to \$23.50
500 lb. and up, \$22 to \$22.50

Bears and Steers—

All Weights, \$20 to \$23

Feeder Pigs—

Per Head, \$15 to \$22

HAY—

1st Cutting, \$90 to \$100
2nd Cutting, \$100 to \$125

STRAW—

Per Bale, 600 to 700

COWS—

Tested Dairy Cows, \$350 to \$450
Tested Beef Type Cows, \$200 to \$300

HEARING AIDS

SALES and SERVICE
REPAIRS, ALL MAKES - RENTALS
Free Home Demonstrations

ADCO HEARING AID CENTER

1900 W. Stadium Ann Arbor, Mich.

Established 1871 The Chelsea Standard Telephone GR 6-3581

Excellence Award By Michigan Press Association
1951-1952-1953-1954-1955-1956

Walter P. Leonard, Editor and Publisher

Published every Thursday morning at 300 North Main Street, Chelsea, Mich. 48118, and second class postage paid at Chelsea, Mich., under the Act of March 8, 1879.

Subscription Rates (Payable in Advance)

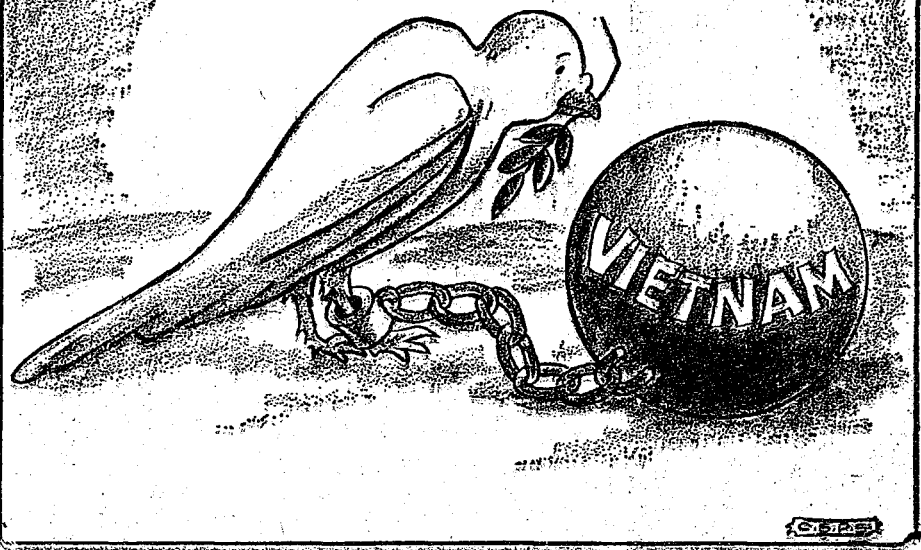
In Michigan:		Outside Michigan:	
One Year	\$4.00	One Year	\$6.00
Six Months	\$2.25	Six Months	\$3.50
Single Copies	15¢	Single Copies	20¢

Service men or women, anywhere, 1 year \$4.00

MEMBER
NATIONAL
NEWSPAPER
ASSOCIATION - Founded 1888

National Advertising Representative:
MICHIGAN NEWSPAPERS, INC.
267 Michigan Ave.
East Lansing, Mich. 48824

"Presidential candidates say I can fly again!"



★ MICHIGAN MIRROR ★

By Elmer E. White, Secretary, Michigan Press Association

Austin Act
While much recent attention has been given to the state picture significantly in both the fields of elections and traffic safety. In one area, they would actually combine the two.

Austin wants people to register to vote at the same time they apply for or renew a driver's license. This would save time and travel for the citizen; consolidate records; or renew a driver's license. If this were done, he says, more people would be eligible to vote, and registration would be done on a regular, efficient basis rather than on a rush basis just before the deadline which preceded election day.

If he can't bring about this change, Austin would at least like to stop the removal from voting rolls of all voters who don't vote for a two-year period. He'd like to see the period extended to four years.

This is hardly for purely altruistic reasons. It is well known many Democratic voters tend to vote only in presidential elections. That means they have to go out and register to vote before each presidential election. Republicans, on the other hand, are more faithful about casting their ballot during off-year elections as well as in presidential years.

Although it seems impossible to control, Austin also would like to see more limits placed on campaign spending in the state. "Presently candidates and supporting committees are supposedly limited to four cents per eligible voter, but there is no limit on the number of committees behind each candidate," he points out.

Austin would like to see stringent standards of 10 cents per voter on all advertising in general elections and a lower limitation for primary elections. There are questions of constitutionality here because the right of people to pay to support a candidate must be dealt with.

More steps to eliminate bad drivers from the road is another Austin goal. First, he would like to give persons convicted of driving while ability is impaired by alcohol or drugs six points on the driver's license instead of the present four.

He would also like to make sure persons who drive with a revoked or suspended driver's license serve 72 consecutive hours in jail under the law now requiring three days imprisonment. He says some judges allow persons to fulfill the three day requirement by serving Saturday night, Sunday and then leaving on Monday morning.

The Secretary of State also would like to set up a system where physicians routinely report medical conditions of patients

whose situation might impair a driver's ability to control his vehicle. This would include having hospitals notify the Secretary of State whenever they admit a driver for the treatment of alcoholism.

Bricks Go
The march of time is about to eliminate the brick road in Michigan.

At last count, there were only 5.9 miles of brick road left in the state highway system. That's out of a total of 9,251 miles in the state highway system.

The longest section of brick paved highway in the state system is a one-half mile section of Saginaw St. in downtown Flint. The remaining 5.4 miles are scattered through 16 lower peninsula counties.

Bricks originally were used to replace decaying plank roads and were considered quite an innovation. But they were slippery when wet or snow covered and dislodged and cracked by trucks, snowplows and fast moving automobiles. When concrete and asphalt made their debut in highway construction, the use of bricks declined.

Many of the brick surfaces on the state highway system were never removed, but were covered by an asphalt covering.

RIVER POWER

The Zaire River in Africa, formerly known as the Congo, empties 1,400,000 cubic feet of water into the Atlantic Ocean every second. This tremendous outpouring of water stains the ocean brown for thirty miles out to sea.

JUST REMINISCING

Items Taken from the Files of The Chelsea Standard

4 Years Ago...

Thursday, Feb. 1, 1968—

Mrs. Byford (Lois) Spear was one of the 56 graduates of Ann Arbor Practical Nurse Education Center. Mrs. Spear spent five and one-half years as a nurse's aide in the Chelsea Methodist Home, and then decided to further her education in nursing.

Karen Poertner and Don Henry have been selected as the Miss Achievement and Mr. Executive of the Chelsea Junior Achievement business at a contest Saturday in Detroit. The winners are selected on poise, personality, appearance and business knowledge. The contest is one of the highlights of Junior Achievement Week activities.

Larry Dann won the top prize of a wristwatch in the March of Dimes bowling tournament county roll-off last Sunday. Dann bowled a three-game total of 632.

Nearly 300 persons were on hand when the Harlem Astronauts, the clowns of basketball, took on the Chelsea school faculty. Despite some fancy shooting on the part of Terry Pokela, Bruce Galbraith and Philip Barais, the Astros managed to dump the faculty, 99-77. Even with coach Wampum Wade putting 10 Chelsea players in at one time—during the last quarter, the faculty just couldn't seem to muster a successful scoring drive.

14 Years Ago...

Thursday, Jan. 30, 1958—

Wallace Wood was honored at a State Farm Insurance Co. dinner commemorating the company's 50th anniversary. Wood has been associated with the company since 1947. His production ranked seventh in the state in 1957.

Eliden Moore, who is with Northwest-Orient Airlines, talked by phone to his mother, Mrs. H.T. Moore, as he was passing over Chelsea by plane Jan. 31 enroute to Minneapolis on a routine flight.

Mr. and Mrs. Walter P. Leonard, publishers of The Chelsea Standard, announced the birth of their second daughter, Helen Kay, born at U. of M. Women's Hospital early Sunday morning. The Leonard's other daughter, Elizabeth May, is two years old.

Stanley Policht and Louis Birch have purchased the N. Main St. business, John's Osborne's Department Store has also changed hands. Mr. and Mrs. Harry Morgan purchased the business and plan to name the store The Patty Ann Shoppe.

The Rev. and Mrs. Philip Rusten were honored at a reception held at the Congregational church Sunday. Approximately 200 members and friends of the congregation in the Chelsea area attended.

24 Years Ago...

Thursday, Jan. 29, 1948—

Jerry Herriek of Chelsea is the winner of the state Jersey award, sponsored by the Michigan Jersey Cattle Club. Herriek's name was submitted by the state 4-H club department in recognition of his superior 4-H dairy project. The award will be a purebred Jersey heifer from one of the best Michigan Jersey herds.

34 Years Ago...

Thursday, Jan. 27, 1938—

Vera Bleeker of Chelsea has been appointed basketball manager for the team of women in her group of the Women's League of Western State Teachers' College, Kalamazoo. Miss Bleeker is a senior enrolled in elementary education.

Miss Betty Watson, daughter of Mr. and Mrs. E. W. Watson of Chelsea, is among students on the honor roll at Montana State College. Miss Watson is a senior in home economics.

Members of the Tachez club were entertained at the home of Mrs. Norbert Merkel. "500" furnished the diversion of the evening with honors awarded to Bertha Merkel and Mrs. Harry Werner.

Mrs. L. J. Paul entertained 26 boys and girls at her home for the pleasure of her daughter, Mary Margaret, on her seventh birthday. Prizes were awarded to Delores Eiseaman, David Longworth, Phyllis and Patricia Hopper.

Dr. Faye Palmer delivered the address at the Kiwanis Club meeting commemorating the anniversary week of the founding of the club. With his characteristic dry humor, Dr. Palmer related many of the humorous incidents which have happened to the club during its 14 years of existence.

Thomas J. Murray, Democratic county chairman, announced the meeting which will be held at 8 p.m. in the Guild Hall of McKean University, Ypsilanti. A resolution in support of a presidential primary will be introduced at this meeting, Murray stated.

BIG CONNECTION?

Fossil plants and animals more than 200 million years old have been found in Antarctica, supporting the theory that the frozen continent once was joined with Australia, South America, Africa, and India in a single landmass.

NEXT STOP AFTER EYE EXAMINATION For Quality Service LENSES - FRAMES

WINANS OPTICAL

PHONE 475-1233

114 N. Main (in Sylvan Hotel) Chelsea, Mich.

DAVID WINANS, Optician

(30 Years with Johnston Optical Co.)

APPOINTMENTS NOT NECESSARY

— OFFICIAL NOTICE —

February Meeting of the DEXTER TOWNSHIP BOARD will be held TUESDAY, FEB. 1 - 8 p.m.

at the Township Hall, 6800 Dexter-Pinckney Rd.

Business to be acted on will be a discussion of zoning and sales ratio studies.

WILLIAM EISENBEISER
Dexter Township Clerk

— NOTICE — Dexter Township Veterans and Senior Citizens

Senior Citizens and Veterans Homestead tax exemptions may be filed with the undersigned until March 17, 1972.

To assist you in filing your affidavit, I will be at the Dexter Township Hall each Friday from Jan. 28 to March 17, 1972, from the hours of 9 a.m. to 5 p.m.

Bring proof of age and ownership and in the case of veterans, the VA form or check.

DEXTER TOWNSHIP

JOHN TANDY, SUPERVISOR

IF YOUR ROOF IS HURTIN' Call Burton!



- ★ Old and New Roofs
- ★ Hot Tar and Metal Roofs
- ★ Aluminum Siding
- ★ Aluminum Awning and Storm Doors and Windows
- ★ Seamless Aluminum Eaves, Traughs and Down Spouts
- ★ Mobile Home or Trailer Skirting

COOPERATIVE ROOFING & SIDING CO.

Call 662-5900 or 662-3288
Evenings Call Burton Rathbun, 663-0754

BEWARE OF EAGLES

Washington—800-foot "jog" has been built into Interstate Highway 75 near Tampa, Fla., to avoid a tree. The tree contains the nest of two bald eagles which arrive every fall.

Telephone Your Club News
To GR 6-3581.



FUTURE BUSINESS LEADERS: Chelsea Junior Achievement's JAPCO displays its candle product during its open house Tuesday evening at Beach school. Company members are, front, from left, Trudy Sanderson, Mark Stapish, John Finney, Cheryl

Speer, Doug Egeler, Audrey Heard, Mary Linebaugh; second row: Linda Hafner, Lee Krieger, Charles Clemans, Dennis Kipmiller, Richard Egeler, Doug Sindlinger, Dale Cook; back row: Bart Wellnitz, Steve Dorer, Randy Buckingham, Art Paul and Dan Heydlauff.

JA Firm, JAPCO Holds Open House

Chelsea's only Junior Achievement company, JAPCO, held an open house Tuesday night at Beach school.

JAPCO, sponsored by Dana Corp., manufactures birdfeeders, candles and Christmas bells which were displayed at the open house.

Company members talked with visitors and explained JAPCO's business operations.

The miniature business has the use of the shop rooms at Beach school for manufacturing. Like other businesses, profits are used to purchase materials, and pay

salaries and dividends to stockholders.

Officers of the 23-member business are Rich Egeler, president; Mary Linebaugh, secretary; Doug Egeler, vice president of manufacturing; Dale Cook, safety director; Bart Wellnitz, purchasing

agent; Cheryl Speer, vice-president of sales; Mark Stapish, treasurer; Audrey Heard, bookkeeper. Company advisors are Ken Kuzon, Levi Ludtke, Mrs. Robert Tobin and Larry Bentley.

Subscribe today to The Standard!

Wrestlers Pin Two More Opponents

(Continued from page one)

fall at 100 pounds, and Carmar Slocum picked up a forfeit victory at 107 pounds. Jon Marzec won a 2-0 decision at 114 pounds and Steve Straub lost a well-fought match, 10-0. John Beeman, wrestling at 128 pounds, delivered a 16-0 loss to his opponent.

At 132 pounds, Larry Jones scored a quick pin at 1:58. Tim Lancaster then shut out his opponent with an 8-0 decision. Tom Hubert, wrestling at 145 pounds, then lost a hard fought 4-2 decision to Northwest's best wrestler. Doug McDonald then picked up a 3-1 decision at 155 pounds. Jon Schenk closed out Chelsea's scoring by gaining a fall at 4:32. Randy Seltz, still attempting to regain his form after an injury, lost a 7-0 match and Steve Worden lost a close 1-0 decision.

in the heavyweight class. The Chelsea matmen take on the Novi team at Chelsea tonight at 6:30 p.m.

School Closing...

(Continued from page one)

Mills said most of the water had been removed by 5:30 that morning.

He said most of the damage occurred in the boiler room, although some water did seep into the ban and vocal music rooms located near the boiler room.

Auxiliary heating was necessary to prevent more pipes from freezing and breaking, and regular heat was not restored until 9:30 Monday evening.

Mills said an estimate on damages is not yet available.

JV Cagers...

(Continued from page one)

25. The aggressive action of the squad brought its season record to 6-3.

Chelsea dominated the game from the beginning with a strong scoring drive in the first quarter, outshooting Dexter, 29-2. At the end of the first half, the Bullpups held a comfortable 45-10 lead. Dexter evened things up a bit in the second half, scoring 15 points to Chelsea's 10, but never proved a threat to the Bullpups.

Leading the Chelsea scoring was Tim Treado with 20, followed by Marvin Guster with 10, Jim Storey, 9 and John Tandy, 8.

Chelsea will take on Saline Friday, then host Manchester Saturday night. Both games begin at 6:30 p.m.

Missionaries...

(Continued from page one)

ber has been field chairman and business advisor and also has been active in the literature program and radio ministry of the area. Recently, he was president of the Immanuel Bible Institute. Mrs. McComber served as Dean of Education at the same school.

The Rev. McComber plans to return to the Philippines to continue his ministry at the Institute the later part of March. Mrs. McComber and their son, Mark, will follow at the close of the school year in June.

Prior to their work in the Philippines, the McCombers served a mission term in Indonesia and Malaysia.

FARMERS' WEEK
East Lansing—Farmers' Week will be held on the Michigan State University campus March 20-24.



TROOP 47—

We took dues then we had flag ceremony. Larie Flinn was invested and then we gave out cooking badges to Teresa Hoffman, Michele Hafner and Geryl Herrick. We learned how to anchor a bandage without a pin. The cadets came to teach us songs and games, then we had treats. We then had our squeeze and taps. Beth Wireman, scribe.

TROOP 169—

Monday, Jan. 17, Troop 169 held a snow party at the home of Mrs. Jack VanGorter. We enjoyed sledging and skating. We also played some games on the ice. We had a bonfire and roasted marshmallows. We also had hot dogs, hot chocolate and cake. Our helpers for the trip were Mrs. Schuitz and Mrs. D. Walz. Dawn Owens, scribe.

TROOP 98—

Troop 98 started the meeting by discussing our 10-mile hike. We are going Saturday, Jan. 29. Then we discussed camp. We decided to have a father-daughter night March 13. Our troop learned some games called "Nope," "Stormy Wind," and "Detective." Juliene Tucker, scribe.

HELIUM ON EARTH?

The gaseous element helium was detected on the sun by early solar scientists before it was discovered on earth.

Jiffy market

BIG ENOUGH TO SERVE YOU.....SMALL ENOUGH TO KNOW YOU!

Corner of SIBLEY & WERKNER RDS....CHELSEA, MICHIGAN

7 AM - 10 PM
OPEN 7 DAYS A WEEK
PHONE 475-5701

COMPLETE SUPER MARKET

SALE PRICES EFFECTIVE THURSDAY, JAN. 27, THRU SUNDAY, JAN. 30, 1972.

Store Hours Are 7 a.m. to 10 p.m. 7 Days A Week

YOUNG - LEAN - TENDER

PORK BUTTS
Roasts . .63^c lb.
Steaks . .69^c lb.

SMOKED PICNICS
4 to 6-Lb. Average **53^c lb.**

ALL - BEEF

Hamburger
Satisfaction Guaranteed
65^c lb.

BEEF LIVER
49^c lb.

FARMER PEET'S FARM HOUSE BACON
1-Lb. Pkg. **59^c**

ECKRICH BOLOGNA
1-Lb. Pkg. **99^c**

FARMER PEET'S HOT DOGS
1-Lb. Pkg. **69^c**

FARMER PEET'S SAUSAGE
1-Lb. Roll **63^c**

KLEEN - MAID — FROM WAY BAKING CO.

WHITE BREAD . . . 1 1/4-Lb. Loaf **19^c**

CAMELOT ELBOW MACARONI
1-Lb. Pkg. **19^c**

JIFFY BAKING MIX
2-Lb., 8-Oz. Pkg. **35^c**

DURKEE'S BLACK PEPPER
4-Oz. Can **39^c**

LIBBY'S TOMATO CATSUP
14-Oz. Bottle **19^c**

CAMELOT TOMATO JUICE
1-Qt., 14-Oz. Can **29^c**

VEVEETA CHEESE 2-Lb. Box **95^c**

COFFEE MATE
Non-Dairy Creamer
6-Oz. Jar **49^c**
16-Oz. Jar **89^c**

BONITA TUNA
6 1/2-Oz. Can **29^c**

FUN SIZE CANDY BARS
3 Musketeers - Snickers Milky Way
1-Lb. Pkg. **69^c**

BROOKS CHILI HOT BEANS
15 1/2-Oz. Can **15^c**

PILLSBURY BISCUITS
Sweet or Buttermilk 8-Oz. Tube
6 tubes 49^c

CRISCO SHORTENING 3-Lb. Can **79^c**

SCHAFFER'S HILLBILLY BREAD
3 1 1/4-Lb. Loaves **\$1**

FARM CREST CREST STIX DONUTS
13-Oz. Box **39^c**

FRESH ORANGE JUICE
1/2 Gal. Plastic **69^c**

SUNSHINE POTATO CHIPS
14-Oz. Bag **69^c**

40-Lb. & 80-Lb. Bags SALT NUGGETS
40-Lb. Bag **\$1.29**

MAXWELL HOUSE Coffee 1-Lb. Can **79^c**

NEW CABBAGE
15^c lb.

California Sunkist NAVAL ORANGES
113 Size **69^c doz.**

RUSSET BAKING POTATOES
8-Lb. Bag **89^c**

CALIFORNIA FRESH CARROTS
1-Lb. Pkg. **15^c**

MICH. U.S. NO. 1 IDA RED APPLES
3-Lb. Bag **49^c**

PURINA DOG CHOW . . . 25-Lb. Bag **\$2.99**

MARATHON DISCOUNT GAS PUMPS
Finest Top Quality Gas at Low Discount Prices!



We appreciate your business!

MARATHON REGULAR GAS **33.9** gal.
Includes All Taxes

MARATHON PREMIUM GAS **37.9** gal.
Includes All Taxes

KLEER - VIEW WINDSHIELD WASHER SOLVENT **59^c gal.**

GAS PUMPS & STORE OPEN 7 a.m. to 10 p.m. 7 Days a Week

February Meeting of the SYLVAN TOWNSHIP BOARD

has been postponed from Tuesday, Feb. 1 and will be held

TUESDAY, FEB. 8 - 7 p.m.
at Sylvan Township Hall

DANIEL J. MURPHY
Sylvan Township Clerk

SPECIAL thru Wednesday, Feb. 2, 1972

BRAZIER BAR-B-Q and FRIES 59^c

(Some of fine Brazier foods)



brazier.

901 S. MAIN ST., CHELSEA PHONE 475-2677

\$300⁰⁰ Allowance

For ANY Car!! Hundreds More Depending on Year and Condition

1964 CHEVROLET	\$295 - 300	1966 FORD Galaxie 500 XL	\$1095 - 300
2-Dr. Hardtop	?	Bucket Seats Air Condition	\$795
1967 FORD 3/4 Ton Pickup	\$1195 - 300	1968 FORD FAIRLANE 500	\$1195 - 300
	\$895	2-Dr. Hardtop	\$895
1969 FORD 3/4 TON	\$2295 - 300	1969 FORD 4-DR. V-8	\$1595 - 300
Camper Special	\$1895	Automatic, Power Steering	\$1295
1970 LTD Squire Wagon	\$3295 - 300	1970 FORD GALAXIE 500	\$2295 - 300
10-Pass., Loaded with extras.	\$2995	2-Dr. Hardtop. Like new.	\$1995
1971 CHEVROLET Vega Hatchback	\$1895 - 300	This is only a partial list of over 40 cars and trucks we have. Bargain prices on all of them. So come on in and deal with us today.	
	\$1595		

PALMER FORD

Open Mon., Wed., and Thurs. Till 9:00
CHELSEA GR 5-3271

Ads
Taken
Till 5 p.m.
Tuesday

IT'S EASY TO
BUY-SELL-RENT-
HIRE & FIND WITH

WANT ADS

Just
Call
GR 5-3581

WANT ADS

The
Chelsea Standard

WANT AD RATES

PAID IN ADVANCE—All regular advertisements, 50 cents for 25 words or less, each insertion. Count each figure as a word. For more than 25 words add 2 cents per word for each insertion. "Blind" ads or box number ads, 35c extra per insertion. CHARGE RATES—Same as cash in advance, with 15 cents bookkeeping charge if not paid before 5 p.m. Tuesday preceding publication. Pay in advance, send cash or stamps and save 15 cents. DISPLAY WANT ADS—Rate, \$1.10 per column inch, single column, which only. Special and 14-point light type only. No borders or boldface type. Minimum 1 inch. CARDS OF THANKS or MEMORIALS—Single paragraph style, \$1.00 per insertion for 50 words or less; 2 cents per word beyond 50 words. COPY DEADLINE—5 p.m. Tuesday week of publication.

KNAPP SHOES

For Cushion Comfort
Robert Robbins
475-7282 48tf

FORMAL WEAR

RENTAL SERVICE

Proms - Weddings - Special Events
6 different colors.

Foster's Men's Wear

FOR REAL DOLLAR SAVINGS
be sure and see us before you
buy any new or used car. Palmer
Motor Sales, Inc. Your Ford Dealer
for over 50 years. 2tf

FINAL JANUARY
CLEARANCE

Big Savings
All Depts.

DANCER'S

32

Real Estate For Sale

NEW LISTING—3-bedroom older
home in excellent condition. Formal
dining room, large utility room
off kitchen, basement, 2-car garage,
gas heat. Located in Chelsea. 1 1/2
acres. \$28,500.

LARGE COUNTRY HOME—3
bedrooms, 3 baths, formal dining
room, family room with fireplace,
rec room ready for paint or
paneling, 2 1/2-car garage. Price
reduced to \$55,000.

3-BEDROOM BRICK—Overlooking
Inverness golf course. North
Lake access. 2 fireplaces, 2 ceramic
baths, full basement, 2-car
garage. Brand new.

CLARENCE WOOD

BROKER

Efficient PERSONAL Service
646 Flanders St., Chelsea
Phone 475-2038. 32tf

K. of C. Meetings

First Wednesday, social party.
Third Wednesday,
hall for rent, 475-4111. 32

1968 CHEVROLET Impala 2-dr.
hardtop. V-8, auto, trans., power
steering and brakes. Silver with
black vinyl roof. Devon Lincoln-
Mercury, 2100 W. Stadium, Ann
Arbor. Ph. 662-5555. 32tf

WANT ADS

BOARDING, trimming, training.
Town and Country Kennels,
Jackson Rd. at Baker. NO 8-7200.
7tf

Gem Travel Trailers

and Campers

PICK UP COVERS

4" ————— \$100.00

26" ————— \$179.00 and up

Triangle Sales

Chelsea 475-4502 40tf

CLOGGED
SEWERReynolds Sewer
Service

We Clean Sewers Without Digging.
Drains Cleaned Electrically.

FREE ESTIMATES

2-YEAR GUARANTEE

Phone Ann Arbor NO 2-5277

"Sewer Cleaning Is Our Business—
Not a Side Line" 38tf

FOR SALE—1965 Corvair. Runs
good. \$50. 475-8852. x32

Buying Or Selling?

Property does sell in the winter
time. If you (or a friend)
are thinking of buying or selling,
don't hesitate to give us a call, and
we will be pleased to discuss your
property with you.

Over 200 salesmen working for you
through our multiple listing service.

Spear & Associates

REALTORS

1935 Pauline Plaza
Ann Arbor, Mich.

Bu. 769-5750

Res. 769-9380 x20tf

FURNITURE
SALE

All Stock Reduced
10% to 40%

Now thru Jan. 29

MERKEL
Home Furnishings

CAR & TRUCK LEASING. For
details see Lyle Chriswell at
Palmer Motor Sales, GR 5-3271. 49tf

FOR SALE—1968 Chevrolet Biscayne
2-dr., 6-cylinder, manual
shift. Call 475-8055. -32

JANUARY
CLEARANCE

1/3 to 1/2

and more off

DANCER'S

1969 MUSTANG sport roof, excep-
tionally clean, low mileage car.
Bright blue with matching trim, 6-
cyl. with stand. trans. Economical
to buy and operate. Devon Lincoln-
Mercury, 2100 W. Stadium, Ann
Arbor. Ph. 662-5555. 32tf

WANT ADS

ROBERT PATRICK for home im-
provement, building and main-
tenance. Ph. 475-7460. 45tf

HAMMOND ORGAN teachers
wanted to teach in their own
homes. Call Grinnell Brothers, Ann
Arbor, 662-5607. 34tf

CALL FRANK for all your carpet
cleaning jobs, morning or week-
end. Needs only 3 hours to dry.
Only 10c per square foot. Phone
now for free estimate, 761-4328.
All work guaranteed. 33tf

PIANO TUNING, Chelsea and area.
Facilities for reconditioning and
rebuilding. Used piano sales; re-
conditioned grands and verticals.
E. Elciund. 426-4429. x50tf

Contractor Servicing
Chelsea, Dexter and
Manchester Areas

Complete Home Remodeling

Inside and Outside

Specializing in extra living space,
recreation rooms, kitchens and
paneling. Installing all aluminum
products, 5" eavestroughs, custom-
made awnings, windows and doors,
aluminum siding in many selected
colors and styles.

Please Call

DALE COOK

Chelsea 475-8863 50tf

NOW

Full Time

Complete

Body Shop

Service

Stop in For An Estimate

PALMER FORD

222 S. Main St.
475-3271 27tf

MARY WOLTER

REAL ESTATE

ONE OR TWO ACRE building site,
Joslin Lake privileges. \$4,000 for
one acre, \$7,000 for both. Quiet lo-
cation.

TWO-ACRE BUILDING SITE
with trees. Gently sloping. Re-
stricted location, near McGregor
Rd. and Portage. \$10,000, terms.

NEAR PATTERSON LAKE, two
small lots, 45x90. Can build on
both. Both for \$1,500.

ONE-THIRD ACRE building site.
Hillside with trees. Portage Lake
privileges with private beach.
\$12,400 with terms.

PATTERSON LAKE CHAIN. Two
canal front lots. Quiet location.
Sodded and cement seawall. Both
lots together, 90x180. Only \$7,000
for quick sale.

LOCH ALPINE. Beautiful hilltop
building site. View of lakes.
\$9,000, terms.

DOYLE RD. and M-36, 10-acre
building site near Gregory. \$1,000
per acre. Also 40 acres for \$28,000,
terms.

PLAINFIELD and M-36. Vacant
130 acres. All 40 acres, \$800 per
acre.

LIBERTY RD., Ann Arbor—160
acres. Attractive 9-room home and
farm buildings. 10 acres of
woods, 150 acres tillable.

109 ACRES, Wagner Rd., 4 miles
from Ann Arbor with 9-room
home and farm buildings.

GREGORY—4-bedroom home and
9 acres. New furnace and roof.
Large barn. Only \$23,000, terms.

Mary Wolter Real Estate is very
happy to announce that Toby Pe-
tersen of Chelsea has joined her
staff of sales people and will be at
the North Lake office. His many
years of business experience will
be a great asset to our organiza-
tion. His phone is 475-8603. We are
also happy to welcome Judy Gruen-
er of Gregory who will also be at
the North Lake office. Her home
phone is 498-2426. Judy has much
to offer with her decorating expe-
rience and enthusiasm for people.
Mary also wishes to thank Alvin
Dieffenhauer of Gregory for his
continued help and loyalty. His
many years of farm and business
experience are appreciated. His
phone is (617) 851-8495.

MARY WOLTER

REAL ESTATE

7421 Dexter-Pineknay Rd.
Phone 426-8188

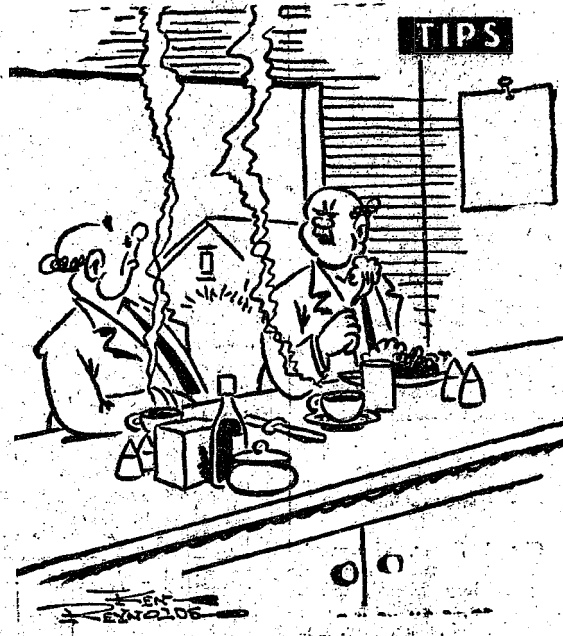
NORTH LAKE BRANCH OFFICE
14034 N. Territorial Rd.
Phone 475-8603 32

G. G. HOPPER

Building Contractors

Phone GR 5-5581

Gregory 498-2148 40tf



"The garbage disposal we got in the Standard Want Ads
can't stand my wife's cooking either!"

WANT ADS

KEEP carpet cleaning problems
small—use Blue Lustre wall to
wall. Rent electric shampooer \$1.
DANCER'S. 32

PATCHING and PLASTERING.
Call 475-7489. 33tf

A fine selection of

New and Used Cars

for immediate delivery

Harper Pontiac

Sales & Service

475-5311

Evenings, 761-2999 1tf

FURNITURE
SALE

All Stock Reduced

10% to 40%

Now thru Jan. 29

MERKEL
Home Furnishings

TRAVEL TRAILERS—18-ft. and
up; 10x55 ft. trailers. John R.
Jones, Trailer Sales, Gregory, Mich.
Phone 498-2655. 48tf

REPAIR SERVICE for household
refrigerators, freezers and gar-
bage disposers. Call Bill, 426-8314.
x12tf

FAMILY BIBLES repaired. Acad-
emy Book Bindery, 3225 Central,
Dexter. 426-8081. x33

CAR RENTAL by the day, week-
end, week or month. Full insur-
ance coverage, low rates. Call Lyle
Chriswell at Palmer Motor Sales.
GR 5-3271. 25tf

Custom

Kitchen Cabinets

and

Formica Tops

Made to Order

475-2857 32tf

1 Lot Ladies

PANT SUITS & DRESSES

1/2 OFF

DANCER'S

32

Always at Your Service
on the Double Quick!

Looking for heads-up
auto service? Look no
further. That's us! Always
on our toes to serve you
promptly, efficiently,
courteously!

UNION 76 OIL PRODUCTS

Jim's Union 76 Service

Tires — Batteries — Tune-Ups — Brake Service — Wheel Alignment

PHONE 475-2822 501 SOUTH MAIN

WANT ADS

WILL DO BABY-SITTING in my
own country home on Cavanaugh
Lake Rd., by elderly lady. Any
age. Phone 475-8033 anytime. -32

Hearthside Yarn Shop

5450 Conway Road

Yarns, needles, accessories

Free instructions in knitting and
crocheting with follow-up assist-
ance.

Orders taken for hand-made items.

Ph. 475-2014 38tf

PRINTING from John's Shop for
any occasion. Prompt, reasonable,
reliable. Call 475-7500 evens,
and week-ends. -34

Headquarters for

BALL BAND

RUBBER FOOTWEAR

at

Foster's Men's Store

FOR SALE—Inlaid vinyl and lin-
oleum tile, Armstrong and Con-
goleum Narin. Installed by skilled
craftsmen. Estimates, terms. Mer-
kel Bros. 475-8621. 31tf

HAY FOR SALE. Phone 498-2878. -33

SALE

Famous Name

Men's & Boys'

SLACKS - JEANS

1/2 & more off

DANCER'S

SEE IT TO BELIEVE IT! A beau-
tiful display kitchen of Wood-
Mode cabinets for LESS THAN
DEALER COST. 13 ft. of oak base
cabinets and 13 ft. of oak wall
cabinets (including a matching vent
hood in oak!). These are top qual-
ity cabinets by one of the country's
leading makers. Reg. list price
\$1409 — Going for \$595! "L"-
shape formica countertop, Reg. \$97,
only \$70. Counter-level Majestic
"Chargrille" (the year-round indoor
barbecue). Reg. \$195. Sale \$129.
A rare opportunity for some smart
homeowner — and ONLY because
we're changing our model kitchen
area! Buy all - or part. Chelsea
Lumber Co., 475-3391. 34

REAL ESTATE
FOR SALE

INCOME PROPERTY—3 apts. All
rented. This home is in very good
condition.

3-BEDROOM home in the heart of
Chelsea.

See or Call

KERN REAL ESTATE

616 S. Main St.
Phone 475-8568 -32tf

WANT ADS

SPIKE'S

FLEA MARKET

ANTIQUES and COLLECTIBLES

Every Saturday

and Sunday

11 a.m. to 7 p.m.

Auctions

Every Saturday

at 7 p.m.

Dealers and public invited.

4065 Page Ave.
Michigan Center, Michigan
(Page Ave. Exit, east 7/10 mile)
Phone (517) 764-0250 x13tf

WONDERFUL WORLD of beauty,

Viviane Woodard Cosmetics, a
subsidiary of General Foods, needs
attractive woman here to learn and
teach professional make-up tech-
niques. Also possible to have small
business of your own. Dorothy Or-
bring, director, 475-8785. M. Sat-
terthwaite 475-5481. x32

Special of the Week

1969 Chevrolet Impala 4-dr. sedan.
Air cond., AM-FM, stereo,
p.s., p.b. One owner. Sharp,
sharp, sharp. \$1895

USED CARS

1970 Electra 225 Limited 2-dr.
hardtop, air cond., loaded. \$3895

1970 Buick LeSabre 4-dr. vinyl top,
air cond. Like new. 2995

1969 Chrysler Newport 2-dr. vinyl
top, air cond., one owner \$1995

1969 Pontiac GTO, p.s., p.b. Very
nice. \$1795

1968 Toronado. Clean, air cond.,
one owner. \$1995

1968 Buick LeSabre Custom 4-dr.
sedan. Clean, one owner \$1595

1968 Chevrolet 2-dr. hardtop, vinyl
top, 307 V-8, p.s., automatic
transmission. \$1395

1968 Ford LTD 2-dr. hardtop, vinyl
top. Very clean. \$1395

1967 Electra 4-dr. sedan. Vinyl top.
Air cond. \$1595

1967 Buick LeSabre 4-dr. hardtop.
Clean, one owner. \$1195

1967 Buick LeSabre 4-dr. sedan.
\$1195

1967 Chrysler Newport 4-dr. se-
dan. Air cond., clean. \$1195

1966 Toronado. Clean, one owner.
\$1095

1966 Electra 225 2-dr. hardtop.
Vinyl top, clean. \$995

1967 Chevrolet Super Sport 2-dr., p.s.,
p.b. \$895

1968 Ford Fairlane 500 3-seat wag-
on. \$795

1962 Volkswagen. Sun roof \$395

1965 Plymouth Fury 2-dr. sedan.
\$295

SPRAGUE

Buick-Olds-Opel, Inc.

1500 S. Main St., Chelsea
Phone 475-8664 32tf

1968 FORD F-250 Camper Special,
custom car, V-8 engine, auto
trans., power brakes, west coast
mirrors, auxiliary fuel tanks. De-
von Lincoln-Mercury, 2100 W. Sta-
dium, Ann Arbor. Ph. 662-5555. 32tf

SNOWMOBILE PROBLEMS? I
service all makes. Tom Coy, 426-
3359. -x33

2-CYCO FUEL

For All 2-Cycle Engines

WHITE GAS

Available at

Gateway

Sports Centre, Inc.

45tf

FURNITURE
SALE

All Stock Reduced

10% to 40%

Now thru Jan. 29

MERKEL

Home Furnishings

WANT ADS

FOR SALE by owner—New 2-bed room home, with walk-in basement, vinyl siding, lots more, come see. Phone (617) 851-8838. -x32

All Insurance Needs

In the convenience of your own home — or mine

N. H. Miles, Allstate

Call GR 5-8834 after 5 p.m.

WORK WANTED — Girls will do house cleaning, office cleaning or any kind of odd jobs. Call 475-8243 or 475-8780. -x33

WORK WANTED — Carpenter wants all remodeling work. Reasonable rates, satisfaction. Phone Gregory 498-2539. -x41

FOR SALE — 18 lots. Phone any day except Saturday. 20337 Old US-12, Chelsea. Phone 475-8866. -x16H

WOULD LIKE TO SHARE a ride to Ann Arbor. Different hours. Will share cost. Phone 475-7118. -x32

Foreign Flavors

Presented By Chelsea Child Study Club 8:00 p.m. Chelsea High School Cafeteria Donation \$2.00 each evening

Monday, January 31st — A SCANDINAVIAN HOLIDAY Mrs. Milton Rockman

Monday, February 7th — A GREEK DELICACY Dr. Clare Warren

Monday, February 14th — CHINESE COOKING CAPERS Mrs. Milton Rockman

Monday, February 21st — A LITTLE GERMAN AND SO FORTH Mrs. Thomas Rust and Mrs. J. R. Seitz

Proceeds will be donated to the Chelsea Public Schools

FOR SALE — Inlaid vinyl and linoleum. Also tile. Armstrong and Congoleum. Installed by skilled craftsmen. Estimates, terms. Merkel Bros. 475-8621. -x32H

HELP WANTED — Sales work for females, with ability to communicate with people. Call collect between 9 a.m. and 5 p.m. (617) 726-0109. -x32

PARTIALLY WOODED ACRES for sale, at the end of Kernwood, just \$13,260. Phone 278-7182 Dearborn. -x32

FOR RENT — Apartment in duplex, new two-bedrooms, carpeting, stove, refrigerator, full basement recreation room. North of Chelsea on N. Territorial Rd. \$200. Call 426-9757. -x33

WANT ADS

FOR RENT — Two bedroom at Portage Lake. Stove, refrigerator, carpeted. No pets. \$100 damage deposit plus lease. Ph. 426-4898. -x4

FRISINGER

CHELSEA — Executive ranch home on 15 acres. Too many extras to list. Professionally landscaped. Scenic view. 2 fireplaces, brick wall in living room.

18 ACRES — 4-bedroom 1-year-old chalet style home, fireplace, balcony. Priced to sell.

GET READY for summer now! Year round home at Sugar Loaf Lake. Fireplace. Priced to sell at \$24,900.

2 ACRES — Lots of pine trees, near elementary school. Large family room with fireplace.

1 ACRE — Large, 3-bedroom ranch home, 2 fireplaces. Excellent condition. Priced to sell at \$43,600.

ANN ARBOR — 2 immaculate 2-bedroom brick ranch homes, both on beautiful wooded lots. Priced for sale in the 30's. Dickinson school area.

3-BEDROOM RANCH — Cathedral ceilings, large fenced yard. High assumable mortgage.

MANY FARMS to choose from: 4 acres, 40 acres. Priced to sell at \$38,000.

LAND — 76 acres. Priced to sell at \$38,000.

26 ACRES — Manchester schools. 40 acres Chelsea schools.

FRISINGER

REALTORS

Chelsea 475-8681

Evenings — Paul Frisinger 475-2621 Herman Koenig 475-2613 Hope Bushnell 475-7180

FOR SALE — Inlaid vinyl and linoleum tile. Armstrong and Congoleum. Installed by skilled craftsmen. Estimates, terms. Merkel Bros. phone 475-8621. -x30H

ICE SKATES SHARPENED. Call after 5 p.m. GR 5-8377. -x32

FREE — 2 female puppies and mother dog beagle and shepherd. Ph. 475-2816 after 4 p.m. -x30H

USED SNOWMOBILES — 1969 Ski Whiz, 24 h.p., electric start, \$595. 1970 Ski Whiz, 22 h.p., manual start, \$575. 1971 Ski Whiz, 28 h.p., electric start, new track, \$950. 1971 Rupp, \$23. 14 h.p., manual start, \$625. 1971 Rupp 634WT, 39 h.p., manual start, \$875. North Lake Sales & Service, 14050 North Territorial Rd. Ph. 475-7448. -x33

WANTED TO RENT — Office space. Call Jim Williams, 475-8320. -x32

WANT ADS

FOR SALE — 1963 Ford station wagon. Good rubber, runs good. \$100. 475-8852. -x32

EARN MONEY MEETING PEOPLE, making friends, helping others like yourself! Avon Sales Representatives get a warm welcome, live busy and profitable lives. Call: 263-2788 or write 3604 Midway Ct., Lambertville, Mich. 48144. -x33

REAL ESTATE

IN PINCKNEY recreation area, a 3-bedroom home with full basement, new furnace. On 10 acres with large barn and 2 silos. \$33,000 on land contract with \$6,000 down.

WATERLOO AREA, 3-bedroom home with carpeting in living, dining rooms and kitchen. Large detached garage and horse barn combination. On 2 1/2 fenced acres. \$28,000 on land contract with \$5,000 down.

3 SCENIC ACRES, 1/4 mile north of Chelsea. On blacktop road with plenty of trees and bordering state land.

DEXTER SCHOOLS, 5-bedroom home with easement to Portage Lake. Needs finishing work and decorating. Natural gas heat, good furnace. 1 block from blacktop road. \$15,500 on land contract with \$1,500 down.

LARGE SELECTION of nice 5 and 10 acres or more parcels in Dexter, Chelsea, Pinckney area.

WE HAVE MANY BUYERS waiting for homes in this area. Let us help you sell your home quickly. -x32

Marshall Realty

440 Dexter Rd., Pinckney, Mich. 878-3182 Evelyn, 475-8583; Joanne, 475-7493 and Dave 475-7275. -x32

Chelsea Glass & Custom Woodworking

140 W. Middle Chelsea, Mich. 475-2226 - 475-4311 -x32H

Full Time SALES PEOPLE NEEDED

Interesting and rewarding career. Will train for our Chelsea branch office. Contact METTY REAL ESTATE Ypsilanti Phone 482-3996 -x33

WANT ADS

BABYSITTING — Full or part-time for your child in my home weekdays. 475-7418. -x33

FOX TRAC SNOWMOBILES — 20 h.p. Futura, \$495. 28 h.p. Contura, \$849. Tom Coy, Sales and Service, 1 service all makes. -x32

XEROX COPIES made. Markie Brothers 475-4111

Jalopie Sale

\$295.00

1966 Mercury 4-dr. sedan, power brakes, V-8, automatic.

1965 Pontiac 6-pass. station wagon, power steering, power brakes, automatic, V-8.

1965 Squire wagon, 6-pass., power steering, power brakes, automatic.

1965 Chevy station wagon, 6-pass., V-8, automatic, power steering.

See Fred Dupuis

Frank Grohs Chevrolet

7120 Dexter-Ann Arbor Dexter, Mich. 426-4677. -x32

WANTED — Electric organ; also pre-recorded reel tapes, and acreage. Phone 475-2377. -x32

FREE PUPPIES — Mixed German Shepherd and Border Collie, 8 weeks old. To give to good homes. Call 475-7791 mornings. -x32

BLACK ANGUS STEER, 1,000 pounds. Ready to butcher. 426-3260. -x32

YOUNG MARRIED COUPLE with no children or pets wants house in country to rent in Chelsea or Manchester area. Call 475-8482 after 5 p.m. -x33

BABY MAID WANTED — No experience needed. Good pay. Anchor Inn, 426-8183. -x33

FIAT 1204 SEDAN — 1967, top shape, always starts, economical, 5-passenger comfort. 475-7548. -x32

9 ACRE PARCEL, 2 acres wooded. At the end of Kernwood Dr. in Chelsea. Call (owner) 1-278-7182. -x32H

"W"

LAKE-FRONT west of Chelsea, 3 large bedrooms, 2 1/2 baths, 1 1/2 car attached garage, fireplace outdoor grill, 80 feet of sandy beach, secluded area, stone construction. New carpets, all drapes.

WINFREY, INC.

(517) 784-8581 KIRA HENRY (517) 764-1416 -x32



UP FOR TWO: Ron Sweeney scores for Chelsea, guarded by Dexter's Al Hosler in Saturday's game. Dreadnaught Mike Scott crouches, ready for a possible rebound, with Jeff Schmidt charging up from behind.

WANT ADS

APARTMENT FOR RENT — 2 bedrooms, fireplace, carpeted. 475-8091. -x32

WANTED

TYPIST

Accurate, 55-60 wpm.

Apply in Person

Chelsea Standard

300 N. Main St. Ph. GR 5-3581

FURNISHED APARTMENT for rent in Chelsea. Available immediately. 2 bedrooms, living room, dining room, kitchen. Call 662-1083. -x32

PRACTICAL NURSE will give best of care for elderly people. Prefer in their homes. Write Box JA-26, in care of Chelsea Standard. -x33

BEEF FOR SALE for the freezer, by quart or half. Phone 475-8331. I. H. Weiss. -x35

STORE FOR RENT — 120 S. Main, next to old bank. Call 475-4001. -x33

HOWELL TOWN AND COUNTRY

SMALL HORSE FARM — Six acres with some trees and a new two-story four-bedroom home. Fireplace, 2 1/2-car garage; blacktop road. Dexter Trail, S 9544.

NEW 3-BEDROOM all electric home on two lots. Good road, Pinckney schools, privileges to Rush Lake, and golf course. CO 9561.

SIX ROLLING ACRES with nice stream, three bedrooms, extra large living room, heated attached garage, greenhouse. Call for appointment to see this nice country home. SS 9543.

WE HAVE HIGH wooded building sites, 2, 5, 10, and 20 acres in Chelsea, Stockbridge, and Pinckney area.

HOWELL TOWN & COUNTRY, INC.

Phone 878-3177

CARLIE WIEDMAN Local Representative 426-3758 -x33

SHORTY, Mouton coat, dark brown, size 12. Good condition, like new. \$25. Phone 475-2780. -x32

FOR SALE — 1962 Oldsmobile, good condition, \$200. 1959 Dodge pick-up, flat head six, runs good. \$125. See at 3255 N. Lima Center Rd., Dexter. Dick Abdon. -x32

FREE PUPPIES — Would make good hunting dogs or pets. Call 475-8641, ext. 46, between 8-4:30, or 498-2424 after 5 p.m. -x33

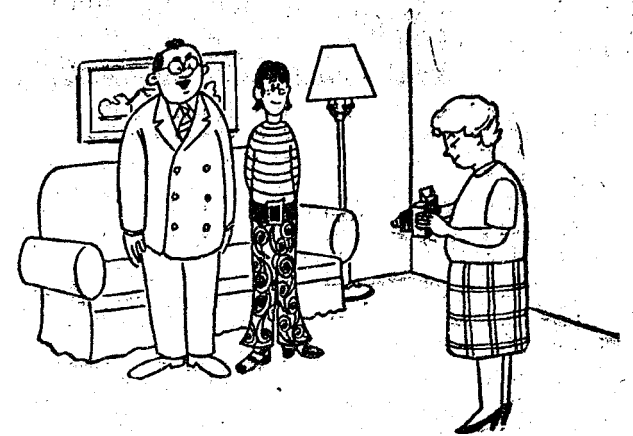
APARTMENT FOR RENT — 2nd floor, 5 rooms and bath. 475-8911. -x32H

RUMMAGE SALE — Includes clothing, sewing machine, trombone, books, misc. items. Jan. 27-Feb. 6, evenings only, at Inverness, North Lake, 7095 Glencoe Dr. -x32

FOR RENT — Small, 2-bedroom cottage in Chelsea area. \$125 per month, furnished. No children, no pets. Available now until June 1. 426-4563. -x32

THANK YOU Many thanks to friends and relatives for the calls and cards. Also many thanks to the Rev. Siebert for his prayers and calls. Thanks to the Women's Fellowship, Needle and Thread group, Mission Club, Koninia and prayer group, Sunday school class, Lima Center Extension and the SoLo, Lafayette and Pomona Grange. All was greatly appreciated. Emma Seitz.

Generation Gap U.S.A.



"It would look more natural if he put his hand in my pocket..."

TODAY'S THOUGHT

By LOUIS BURGHARDT

This is a true story. . . . A bereaved family was asked by friends how they could arrange a living memorial. Their answer — "In memory of mother, visit a shut-in on a regular schedule. Share yourself and your time with someone on whom time hangs heavily."

They did it. Their own lives were enriched when they saw the sunshine their visits brought into the drab existence of those who were hidden by the clouds of unconcern. One person accepted the suggestion differently. She took some cookies to a newly arrived overseas bride who had no friends in the United States. Another family varied the suggestion by inviting a lonely, elderly widower in their neighborhood to dinner. He was reinvited again and again. The children adore him, call him Grampa.

We relate the story here because we think loneliness can be a dreadful storm in the sea of life. Isn't it nice to see God's hands working with human hands on the helm? . . . BURGHARDT FUNERAL HOME, 214 East Middle St., Chelsea, Mich. Phone GR 5-4141.

—SPECIALS—

ALL FLAVORS MILLER'S

Ice Cream . . . 1/2 gal. 74c

ECKRICH ALL-BEEF

Hot Dogs . . . 1-lb. pkg. 75c

NO. 2 1/2 CAN VAN CAMP'S

Pork & Beans 27c

NO. 303 CAN DEL MONTE

Fruit Cocktail . . 2 for 57c

JIFFY

Frosting Mix . . . 3 for 29c

KUSTERER'S

FOOD MARKET

DIAL 475-2721

WE DELIVER

Everything you ever wanted in a home at a price you never expected to find.



GRAND OPENING THIS SAT. & SUN.

MODEL OPEN 1 p.m. to 5 p.m.

Best homes are just perfect for a growing family. They're the cream of the crop. Real, old-fashioned craftsmanship. Quality features. Everything you could ask for in a home. The living's great in a Best home.

MODEL LOCATION: 13019 Old US-12 One mile east of Chelsea

Model furnished by Merkel Bros.

Builders of

W. C. WEBER CONST. CO.

12290 JACKSON RD. CHELSEA, MICH.

CHELSEA'S PREMIER BUILDER



\$27,900⁰⁰

EXCLUDING LOT

- 1 1/2 BATHS
- APPLIANCES INCLUDING DISHWASHER
- 2-CAR GARAGE
- FAMILY ROOM
- DINING ROOM
- FULLY CARPETED
- SEPTIC TANK DRAIN FIELD AND WELL
- FULL BASEMENT

MODEL 475-1213

SALES 663-1935

OFFICE 475-2828

Community Calendar



Young Homemakers Thursday, Jan. 27, 8 p.m. at the home of Mrs. Linda Ames, Cody Rd.

Senior Citizens at Korner House, Feb. 3, 7:30 p.m. Social meeting, anyone over 50 welcome.

Couples Club of Congregational church, Jan. 30, 7:30 p.m., at home of Mr. and Mrs. V. L. Parks. Bring your favorite slides and films.

Limaneers, Thursday, Feb. 3, 12:30 p.m. at the home of Mrs. M. W. McClure.

Public card party, Jan. 29, 8 p.m., at Masonic Temple, sponsored by OES.

Past Matron's pot-luck at Mrs. Guy Weatherwax's, Feb. 10, 12:30 p.m.

Regular communication of Olive Lodge, No. 156 F&AM, Tuesday, Feb. 1, 7:30 p.m.

American Legion Auxiliary, Tuesday, Feb. 1, 8 p.m., Sylvan Township Hall.

American Legion and Auxiliary hospital equipment available by contacting Don O'Dell at 475-8249.

Inquiries regarding the Chelsea blood bank may be directed to Harold Jones in the event that Mrs. Dudley Holmes is unavailable, or to Mrs. Pauline McKenna, American Red Cross in Ann Arbor, 971-5300.

Citizens for Quality Education (CQE), Wednesday, Feb. 2, 8 p.m., at Chelsea High school library. Public invited.

Meeting of volunteers for Chelsea United Methodist Home, Feb. 1, 10 a.m., in B-1 lounge at the home.

Regular meeting of Olive Chapter 108, Masonic Hall, Feb. 2, 7:30 p.m.

Pack 415 committee meeting, Thursday, Feb. 3, 8 p.m., at home of Jerry Herrick.

Michigan Youth Symphony Orchestra concert, Jan. 30, 8 p.m., Chelsea High auditorium.

Association for Children with Social and Learning Difficulties, Feb. 3, 8 p.m., Service Center, 1575 Miller, Ann Arbor. Liz Johnson will conduct discussion on children with social problems. More information, 761-8182, 9 a.m. to 12 p.m.

Cavanaugh Lake, North Sylvan Grange at the home of Mr. and Mrs. Lyman Adams, 114 N. East St., Feb. 1, 12:30 p.m. Pot-luck, bring a dish to pass and table service.

BIRTHS

A son, Zachary Edward, to Mr. and Mrs. Roger E. Sheren, 14580 Stofer Ct.

A daughter, Allison Elizabeth, born Jan. 22 to Mr. and Mrs. Edwin Brown. Paternal grandparents are Mr. and Mrs. Albert Brown, Chelsea. Maternal grandparents are Mr. and Mrs. Merle Davis, Blue Island, Ill.

Karate Classes...

(Continued from page one)
Prospective students are asked to arrive at the first class by 6:30 p.m. for registration and payment of fees. Those interested in the class are welcome to attend this session to observe actual instruction with no obligation to join, Yu said.

DEATHS

William Hitchingham Dies Friday Evening In Automobile Accident

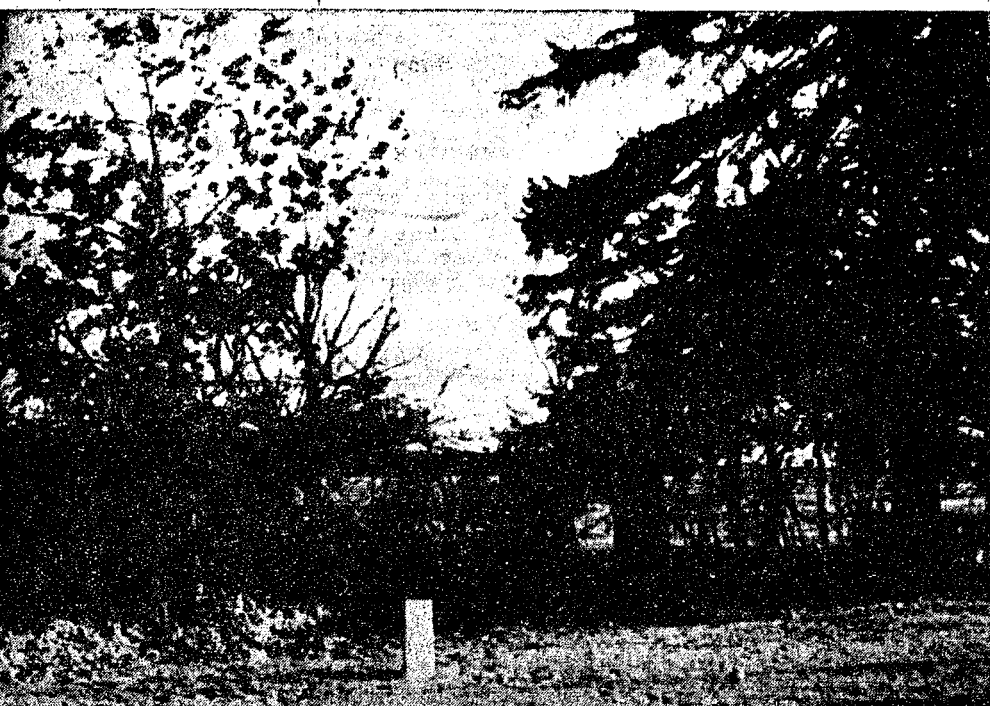
William P. Hitchingham, 49, died Jan. 21 near Ann Arbor as a result of an automobile accident. Born March 17, 1922, in Milan, he was the son of William and Pearl (Kuhn) Hitchingham.

He graduated from St. Thomas school in Ann Arbor in 1940 and married Grace Menkel Oct. 30, 1944.

Mr. Hitchingham was a veteran of World War II and served in England and France. He was a member of St. Mary Catholic church in Chelsea. He was employed by Ford Motor Co. as an electrician for 18 years.

Surviving are his widow; his mother, Mrs. Pearl Hitchingham, Ann Arbor; two sons, Michael, Ann Arbor and Jeffery, at home; three sisters, all of Ann Arbor, Mrs. Virginia Koons, Mrs. Marilyn West and Miss Patricia Hitchingham, and one grandchild, Michael Hitchingham, Jr.

Funeral services were Tuesday, Jan. 26, at St. Mary church with the Rev. Fr. Francis Wahowiak officiating. Rosary was Monday evening at Staffan Funeral Home. Burial was in Mt. Olivet Cemetery.



WIND FELS 100-YEAR-OLD TREE: A giant pine tree in the Pierce family cemetery on Old Manchester Rd. was destroyed by high winds Monday night. The pines were planted more than 100 years ago when the cemetery was established.

District Court Proceedings

Week of Jan. 19-25

In 14th District Court during the week of Jan. 19-25 Kent Anderson, Brighton, pled guilty to failure to maintain equipment, no proof of insurance and having no driver's license. He was referred to probation.

Richard Bentley and Michael Bentley pled guilty to being drunk and disorderly. Each was ordered to pay \$50 fines and costs.

David Bysyk, Alma, pled guilty to having no driver's license and was ordered to pay \$54 fines and costs or spend 10 days in jail.

John Parker, Pinckney, pled guilty to having defective equipment and was ordered to pay \$20 fines and costs.

Sigmund Koeck, Dexter, pled guilty to having no snowmobile registration and was ordered to pay \$10 fines and costs.

William Maggard, Gregory, pled guilty to speeding and was ordered to pay \$21 fines and costs.

William Cairns, Ann Arbor, was found guilty of careless driving and ordered to pay \$44 fines and costs or 10 days in jail.

Larry Camp, Plymouth, was found guilty of making an improper U-turn and ordered to pay \$28 fines and costs or serve 10 days in jail.

Sigsbee Fritz, Stockbridge, pled guilty to driving under the influence of liquor and was sentenced to pay \$254 fines and costs and one year probation.

Tony Scott, Livonia, pled guilty to speeding and was ordered to pay \$31 fines and costs.

Alvory Pach, Belleville, pled guilty to speeding and was ordered to pay \$23 fines and costs or serve 10 days in jail.

John Ceriani pled guilty to driving under the influence of liquor and is awaiting sentencing.

Leo Kohorst, Brooklyn, pled guilty to speeding and was ordered to pay \$31 fines and costs or 10 days in jail.

David Copeland, Ypsilanti, pled guilty to disregarding a red signal and was ordered to pay \$16 fines and costs or serve 10 days.

Ronald Cline pled guilty to being drunk and disorderly and was ordered to pay \$50 fines and costs or serve 20 days in jail.

George Burg, Saline, was found guilty of careless driving and was ordered to pay \$50 fines and costs or serve 20 days in jail.

James Gunter, Ypsilanti, pled guilty to driving under the influence of liquor and is awaiting sentencing.

fluence of liquor and is awaiting sentencing.

Paul Emmons, Taylor, pled guilty to being drunk and disorderly and was ordered to pay \$50 fines and costs or serve 10 days in jail.

Vincent Wilson, Pinckney, was sentenced to pay \$150 fines and costs and attend the alcohol safety program.

Richard Roza, Whitmore Lake, pled guilty to having an uncased gun and was ordered to pay \$35 fines and costs.

Theodore Bass, Ann Arbor, pled guilty to speeding and was ordered to pay \$43 fines and costs or serve 10 days in jail.

Ronald Muzzy, Clarkston, pled guilty to speeding and was ordered to pay \$41 fines and costs or serve 10 days in jail.

Arthur Wilcox, Dexter, pled guilty to speeding and was ordered to pay \$21 fines and costs.

Steven Hill, Ann Arbor, pled guilty to having no operator's license and was ordered to pay \$79 fines and costs or serve 10 days.

Frank Reynolds, Pinckney, pled guilty to having no operator's license on his person and was ordered to pay \$79 fines and costs or serve 10 days.

Paul Presswood, Ann Arbor, pled guilty to driving under the influence of liquor and is awaiting sentencing.

Jeffrey Kramer, Westland, pled guilty to littering and was ordered to pay \$100 fines and costs or serve 10 days in jail.

James Clay, Whitmore Lake, pled guilty to driving under the influence of liquor and was ordered to pay \$150 fines and costs and sentenced to one year probation.

Roger Brooks and Roger Williams pled guilty to concealment of stolen property and were each ordered to pay \$75 fines and costs or serve 20 days in jail.

Club and Social Activities

ROGERS CORNERS EXTENSION

Rogers Corners Extension Study Group met Tuesday, Jan. 18, at the home of Mrs. Ernest Wenk with Mrs. John Morris as co-hostess.

The eighteen members present responded to the roll call topic of "If You Had All the Money, Leisure Time and No Worries, What Would You Do or Where Would You Go?"

The lesson, "The Balancing Act," was given by Mrs. Ray Manzel and Mrs. Earl Huehl.

Refreshments were served at the conclusion of the meeting.

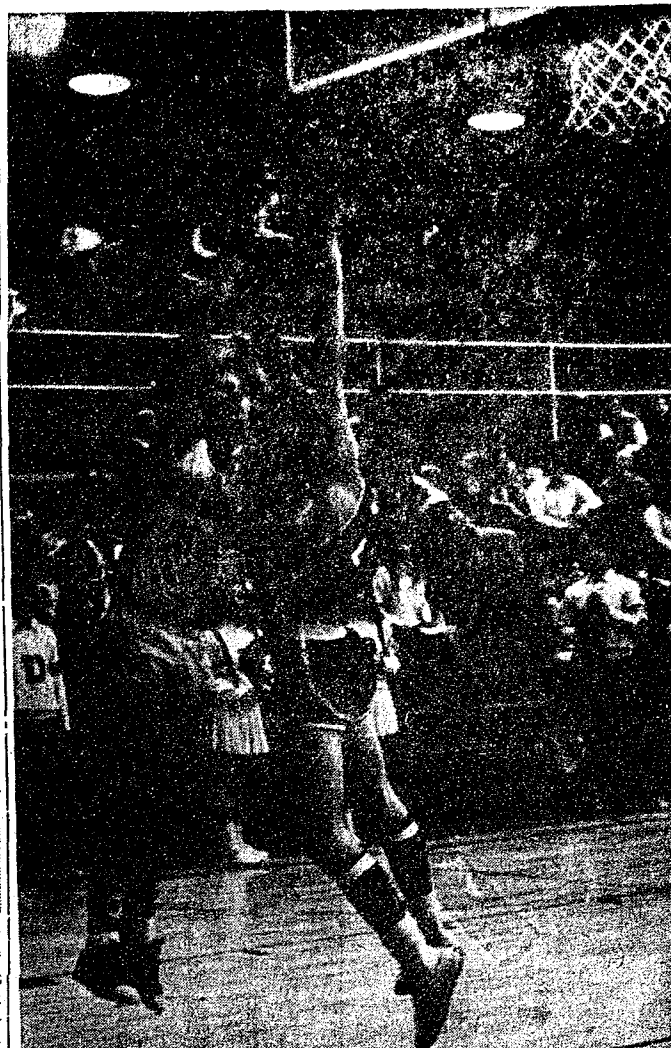
Next meeting will be Feb. 15 at the home of Mrs. Erwin Wenk with Mrs. Ray Manzel as co-hostess. Roll call topic will be "The Funniest Gift I Ever Received" and Mrs. Norman Wenk and Mrs. Thomas Johnson will present the lesson, "Building Memories."

PAST NOBLE GRANDS
The Jan. 11 Past Noble Grand meeting was at the home of Mrs. Lucille Altstaetter with a pot-luck dinner at 6:30 p.m. Fourteen members attended.

The dinner was followed by a business meeting and election of officers. 1972 officers are: president, Loydell Keezer; vice-president, Marion Pickell; secretary, Joyce Dietle; treasurer, Lucille Altstaetter.

PNG's newest member, Phyllis Harok, was initiated into membership. Outgoing president, Elsie Hinz, won the door prize and was presented a thank-you gift for her services in 1971.

Next meeting will be Feb. 8, 7:30 p.m., at the home of Dorothy Keezer with Loydell Keezer as co-hostess. A silent auction will be held and each member is asked to bring an item.



CLOSE COMPANY: Bulldog Jeff Daniels shoots a field goal despite close defensive action from Mark Ayers. Chelsea defeated Dexter, 73-52, in Saturday's game.

Winter Recreation Program

Week of Mon., Jan. 31 through Sat., Feb. 5

MONDAY—8:00-10:00 p.m.—Ladies conditioning at Chelsea High school.

TUESDAY—6:30-8:30 p.m.—Men's basketball at Beach Junior High.

THURSDAY—6:30-8:00 p.m.—Beginning tennis at Beach Junior High.

8:00-9:30 p.m.—Advanced tennis at Beach Junior High.

SATURDAY—9:00-11:00 a.m.—Boy's basketball, 2nd through 6th grade, at Beach Junior High.

9:00-11:00 a.m.—Girl's gymnastics and games, at Chelsea High school.

Want to sell a car? Use a Standard Want Ad!

WHERE ELSE

CAN YOU GET
ONE OF THE COUNTRY'S
TOP QUALITY*

LATEX INTERIOR PAINTS

CUSTOM MIXED

TO THE EXACT SHADE YOU WANT

FOR \$6.95 GAL.!



★ QUALITY MEANS -

- ★ MORE COVERAGE PER GAL.
- ★ MORE HIDING POWER
- ★ A BETTER LEVELING FACTOR
- ★ GREATER SHEEN-UNIFORMITY
- ★ GREATER SCRUBBABILITY
- ★ MORE YEARS OF WEAR

Try the Friendly One for all your Painting Needs!

CHELSEA LUMBER

ALL WALLPAPER IN STOCK

Kitchen - Bedroom - Living Room
Dining Areas

25% OFF

Now Until Feb. 15

GAMBLES

110 N. Main St.

Ph. 475-7472

Deadline for W-2 Forms Is Jan. 31

Detroit—The deadline for employers to give employees their 1972 W-2 forms is Monday, Jan. 1, Thomas A. Cardozo, District Director of Internal Revenue for Michigan, said today.

The form should show earnings, income tax withheld and Social Security information.

A W-2 from each employer has to be filed by the employee with his income tax return. Therefore, it is important that employers furnish W-2's to their employees by the date required to permit timely preparation and filing of employees' tax returns.

A penalty may be charged an employer for each late W-2 he sends out.

JANUARY DISCOUNTS

STEREO TAPES, 8-Track ALL TAPES IN STOCK

Including Our Complete New Stock

\$3.99 ea.

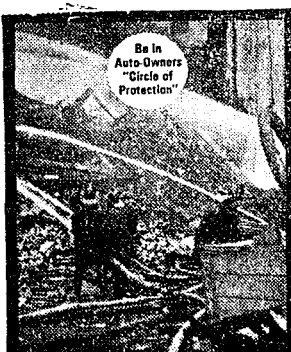
ALL RECORDS ... 25% OFF

BUDGET-WISE STORE

Chelsea's First Discount Store

116 South Main Street

Phone GR 9-1611



In case of fire do you have "ready money" to rebuild? Better get

Auto-Owners

Fire Insurance

See your A-O Man

A. D. MAYER AGENCY, INC.

"Your Protection Is Our Business"

115 Park St. Chelsea
Phone 479-5061

Auto-Owners INSURANCE COMPANY
Home office at Lansing, Michigan

1/2 PRICE SALE!

If Your Suit or Sport Coat Size Is Listed Below
— RUSH IN —

SUIT SIZE	38	39	40	42	44
Short				1	1
Regular		2	1	3	2
Long	1		1	1	

SPORT COAT SIZE	36	39	40	42	44
Short	1		2		
Regular		2	3	6	3
Long			1		

STRIETER'S MEN'S WEAR

"The Place To Go for Brands You Know"

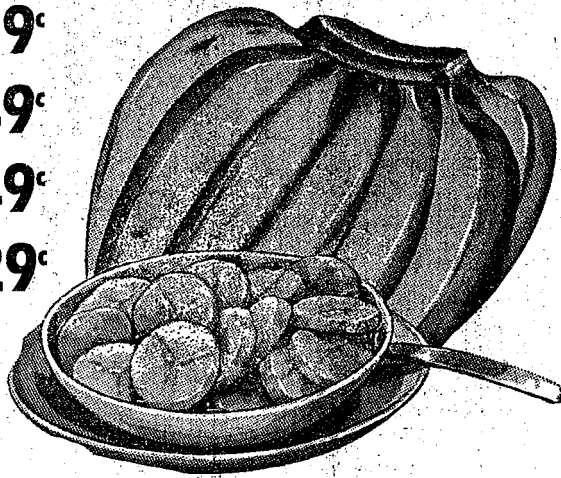


OF CHELSEA

at 1101 M-52

OPEN SUNDAYS

FLORIDA 100 Ct.
TANGELOS . . . Doz. **59¢**
U.S. NO. 1 RED DELICIOUS
APPLES . . . 3-Lb. Bag **49¢**
TENDER
BROCCOLI . . . Bunch **49¢**
NEW CROP
CABBAGE . . . 2 **29¢**
SWEET
PINEAPPLE . . . Each **49¢**
U.S. NO. 1 CALIF.
CARROTS . . . 2 Lbs. **39¢**



CHIQUITA
BANANAS 2 lbs. **25¢**
WAXED FOR FRESHNESS
RUTABAGAS . . . lb. **10¢** ENDIVE OR
ESCAROLE . . . Lb. **29¢**
CHERRY
TOMATOES . . . Pt. **49¢** FLAVORITE
POPCORN 2 Lb. Bag **33¢**

GOVERNMENT INSPECTED
CUT UP FRYERS . . . lb. **33¢**
FRYER
WHOLE LEGS . . . Back On lb. **49¢**
FRYER
BREASTS . . . Ribs, Back On lb. **59¢**
FRYER
THIGHS . . . lb. **59¢** FRYER
Drumsticks lb **65¢**



LEAN, TENDER
PORK STEAK . . . lb. **69¢**
SCOTCH BRAND Whole or Shank Half
BONELESS HAM lb. **89¢**
U.S.D.A. CHOICE BEEF, TENDER, JUICY, STANDING 1-4 Rib, lb. \$1.29
RIB ROAST . . . 4-6 Rib Lb. **\$1.09**

FREEZER SPECIAL
U.S.D.A. CHOICE
BEEF LOINS . . . 40 to 60 lbs. **99¢ lb.**
Consists of Sirloin Steak, Porterhouse Steak, T-Bone Steak and small amount of ground beef.
CUT, WRAPPED, FROZEN AS YOU LIKE IT.

FRESH BEEF TONGUE . . . lb. **49¢** FRESH BEEF LIVER . . . lb. **49¢** FRESH SLICED BEEF HEART . . . lb. **49¢**

CLIP & SAVE
SAVE 30c WITH COUPON
COCA-COLA
8 Pak 16-Oz. N. R. Bottles **99¢**
And additional purchase of non-coupon items of \$7.00 excluding beer, wine or cigarettes. Lesser Amounts at Regular Price.
LIMIT 1 EXPIRES JAN. 29, 1972

CLIP & SAVE
SAVE 30c WITH COUPON
CHASE AND SANBORN
COFFEE
2-Lb. Can **\$1.19**
And additional purchase of non-coupon items of \$7.00 excluding beer, wine or cigarettes. Lesser Amounts at Regular Price.
LIMIT 1 EXPIRES JAN. 29, 1972

CLIP & SAVE
SAVE 12c WITH COUPON
GOLD MEDAL
FLOUR
5-Lb. Bag **39¢**
And additional purchase of non-coupon items of \$7.00 excluding beer, wine or cigarettes. Lesser Amounts at Regular Price.
LIMIT 1 EXPIRES JAN. 29, 1972

CLIP & SAVE
SAVE 22c WITH COUPON
NORTHERN PAPER
TOWELS
3 Jumbo Rolls **89¢**
And additional purchase of non-coupon items of \$7.00 excluding beer, wine or cigarettes. Lesser Amounts at Regular Price.
LIMIT 3 EXPIRES JAN. 29, 1972

CLIP & SAVE
SAVE 26c WITH COUPON
SEA PAK FROZEN
FISH STICKS
14-Oz. Pkg. **59¢**
And additional purchase of non-coupon items of \$7.00 excluding beer, wine or cigarettes. Lesser Amounts at Regular Price.
LIMIT 1 EXPIRES JAN. 29, 1972

COCA COLA 8 Pak 16-Oz. N. R. Bottles **99¢**

CHASE AND SANBORN
COFFEE . . . 2-Lb. Can **\$1.19**

GOLD MEDAL
FLOUR . . . 5-Lb. Bag **39¢**

NORTHERN PAPER
TOWELS . . . 3 Jumbo Rolls **89¢**

SEAPAK FROZEN
FISH STICKS . . . 14-Oz. Pkg. **59¢**

CHEERIOS . . . 10-Oz. Box **29¢**

KLEENEX BOUTIQUE
BATHROOM TISSUE . . . 3 2-Roll Pkgs. **89¢**
KRAFT JET PUFFED
MARSHMALLOWS . . . 2 10-Oz. Pkgs. **39¢**
OSCAR MAYER
LUNCHEON MEAT . . . 12-Oz. Can **39¢**
HORMEL
CHILI WITH BEANS . . . 3 15-Oz. Cans **\$1.00**
KEN-L-RATION
STEW DOG FOOD . . . 2 15 1/2-Oz. Cans **33¢**
CONTADINA
TOMATO SAUCE . . . 2 8-Oz. Cans **23¢**

CLIP & SAVE
SAVE 12c WITH COUPON
CHEERIOS
10-Oz. Box **29¢**
And additional purchase of non-coupon items of \$7.00 excluding beer, wine or cigarettes. Lesser Amounts at Regular Price.
LIMIT 1 EXPIRES JAN. 29, 1972

COUNTRY QUEEN GRADE AA
MEDIUM EGGS . . . 3 **\$1**

ASSORTED BANQUET FROZEN
COOKIN' BAGS . . . 4 5-Oz. Pkgs. **\$1**

SEALTEST
COTTAGE CHEESE . . . 3 16-Oz. Ctns. **\$1**

BORDEN'S
HEATH BARS . . . 6 pac **49¢**

WONDER
SANDWICH BREAD . . . 3 20-Oz. Loaves **\$1**

POLLY'S
POTATO CHIPS . . . 14-Oz. Bag **49¢**

GOVERNMENT INSPECTED FRESH DRESSED
FRYERS
WHOLE
lb. **29¢**

BONELESS, ROLLED, WASTE-FREE
PORK ROAST . . . lb. **65¢**
ARMOUR STAR SMOKED
DELITES, 1 1/2 to 3 lb. avg., . . lb. **99¢**
LEAN, TENDER
CUBE STEAK . . . lb. **\$1.29**
HYGRADE FOREST BROOK
SLICED BACON . . . 1 1/2-Lb. Pkg. **69¢**
HYGRADE WEST VIRGINIA THICK
SLICED BACON . . . lb. **\$1.19**
HYGRADE ALL MEAT
BALL PARK FRANKS . . . lb. **89¢**
FARMER PEET'S 9 VARIETIES SLICED
LUNCH MEATS . . . lb. **79¢**
U.S.D.A. CHOICE BEEF
RIB STEAKS . . . lb. **\$1.29**
FARMER PEET'S CHUNK
BRAUNSCHWEIGER . . . lb. **49¢**
FARMER PEET'S ROASTED OR POLISH
SAUSAGE . . . lb. **79¢**
FARMER PEET'S V.C. PURE PORK SAUSAGE
PATTIES . . . lb. **59¢**

7 1/4-OZ. PKG. KRAFT MACARONI
DINNER . . . **16¢**
64-OZ. ELF BREAKFAST
ORANGE DRINK . . . **39¢**
16-OZ. CAN DOLE
FRUIT COCKTAIL . . . **26¢**
42-OZ. LA CHOY
BI-PAK . . . **97¢**
2-LB. PKG. AUNT JEMIMA
PANCAKE MIX . . . **43¢**
24-OZ. AUNT JEMIMA
SYRUP . . . **59¢**
32-OZ. JAR ELF
SALAD DRESSING . . . **39¢**
49-OZ. COLD POWER
DETERGENT . . . **59¢**
25-OZ. PRE-SOAK DETERGENT
AXION . . . **59¢**
2 1/2-LB. JAR GOOD VALUE
PEANUT BUTTER . . . **99¢**
2 1/2-LB. ELF
POTATO FLAKES . . . **99¢**
16-OZ. PKG. RICHELIEU WESTERN
DRESSING . . . **59¢**
3-LB. CAN
CRISCO . . . **79¢**
12-OZ. BOWL CLEANER
TY-D-BOL . . . **79¢**
14-OZ. CAN SPRAY DISINFECTANT
LYSOL . . . **\$1.29**

ACROSS 5. Tooth 22. Won- **Today's Answer**

1. Summoned, as to court
6. Married pair
11. Habituate
12. Flee to wed substance
6. Jason's wife
7. Drooping
8. Antoinette, to pals
der-
ment
23. Miss Lillie
24. "____ Miser-

13. Begin
(2 wds.)
14. Gift
recipient
15. Slang
term of
endearment
17. Call ____
day
(2 wds.)
18. "Lily Maid
of Astolat"
22. Competent
26. Pleasant
and
unpleasant
28. _____noire
29. Military
phrase
30. Greek
letter
31. A ____to
swallow
(2 wds.)
35. A Churchill
39. Line
segments
40. Equally
41. Wear away
42. German
river
43. Actor
9. Fencing fol
10. Archieps-
copate
16. Repeat
18. Subside
19. Pre-
varica-
tion
20. Sla-
mese
coin
21. Suffix
for
meter
25. Summer,
in
Paris
27. Had
the
leading
role
30. Heav-
ens
31. Big bundle
32. Mascagni
opera
33. Accept
34. Trim
35. False
god
36. Venetian
resort
37. Mortgage
38. Proverb

Alain —

DOWN

1. Sound of disapproval
2. Over again
3. Stringed instrument
4. Iroquoian

NOTICE

Lima Township Taxpayers

I will be at Chelsea State Bank to collect Limn Township taxes on the following Fridays: Dec. 31, Jan. 14-28, Feb. 18-25. Those who wish may send check or money order. Receipts will be returned by mail.

**All Dog Licenses must be paid to
Lima Township Treasurer before
March 1, 1972, to avoid penalty.**

ALL DOG LICENSES \$4.00

**Rabies Vaccination Papers must be presented
in order to obtain dog license.**

HILDA PIERCE
LIMA TOWNSHIP TREASURER

NOTICE

Lyndon Township Taxpaye

Lyndon Township Treasurer will be at Chelmsford State Bank to collect Lyndon Township taxes.

Saturday, Jan 29, 1972, Feb. 19 and Feb. 26, 1972, from 9 a.m. to noon, and on any other day, at my home, 16366 Farnsworth Rd., Stockbridge, Ga.

**All Dog Licenses must be paid to
Lyndon Township Treasurer on or before
March 1, 1972, to avoid penalty.**

ALL DOG LICENSES \$4.00
 Rabies Vaccination papers must be presented in order to obtain license

NANCY WHITE
 LYNDON TOWNSHIP TREASURER

—NOTICE—
Sylvan Township Taxpayers
Sylvan Township Treasurer will be at 103 N. ...

CHECKS WILL BE ACCEPTED BY MAIL

**All Dog Licenses must be paid to
Sylvan Township Treasurer before
March 1, 1972, to avoid penalty.**

MARCH 1, 1912, to avoid penalty.
ALL DOG LICENSES \$4.00
Rabies Vaccination papers must be presented in order to obtain license.

FRED W. PEARSAL
SYLVAN TOWNSHIP, TREASURER

CROSSWORD PUZZLE

ACROSS

1. Summoned, as to court

5. Tooth substance

6. Jason's

22. Wonderment

Today's Answer

WORD REEEM

6. Married pair	wife	23. Miss Lillie	24. " "
11. Habituee	7. Drooping	8. Antoinette, to pals	25. Summer, in Paris
12. Flee to wed (begin)	9. Fencing foil	10. Antelope's copate	27. Had the
13. Gift recipient	16. Repeat	18. Subside	33. Accept
15. Slang term of endearment	19. Pre- varica-		

17. Call _____ day (2 wds.)	20. Sla- mese coin	leading role	34. Trim
18. "Lily Maid of Astolat"	21. Suffix for meteor	30. Heav- ens	35. False god
22. Compen- t		31. Big bundle	36. Venetian resort
26. Pleasant and unpleasant		32. Macagni opera	37. Mortgage
28. _____ noire			38. Proverb
29. Military phrase			
30. Greek letter			
31. A _____ to swallow (2 wds.)			

38. A Churchill
39. Line segments
40. Equally
41. Wear away
42. German river
43. Actor Alain _____

DOWN

1. Sound of disapproval
2. Over again
3. Stringed instrument
4. Iroquoian

16	19	20	21		22	23	24	25
26					27			
28				29				
			30					
	31	32	33		34	35	36	37
38				39				
40				41				
42				43				

NOTICE

Lima Township Taxpayers

I will be at Chelsea State Bank to collect Limpsittakorn Township taxes on the following Fridays: Dec. 31, Jan. 14-28, Feb. 18-25. Those who wish may send check or money order. Receipts will be given.

**All Dog Licenses must be paid to
Lima Township Treasurer before
March 1, 1972, to avoid penalty.**

HILDA PIERCE
LIMA TOWNSHIP TREASURER

NOTICE

Lyndon Township Taxpayers
Lyndon Township Treasurer will be at Chelsham State Bank to collect Lyndon Township taxes Saturday, Jan. 29, 1972, Feb. 19 and Feb. 26, from 9 a.m. to noon, and on any other day, by home, 16366 Earnsworth Rd. Stockbridge, Mich. 49081.

Receipt will be returned by mail.

All Dog Licenses must be paid to

**All Dog Licenses must be paid to
Lyndon Township Treasurer on or before
March 1, 1972, to avoid penalty.**

ALL DOG LICENSES \$4.00

Rabies Vaccination papers must be presented in order to obtain license

NANCY WHITE

NANCY WHITE
LYNDON TOWNSHIP TREASURER

NOTICE

=NOTICE=

Sylvan Township Taxpayers

Sylvan Township Treasurer will be at 103 N. Main St., Chelsea, to collect Sylvan Township taxes on

CHECKS WILL BE ACCEPTED BY MAIL

**All Dog Licenses must be paid to
Sylvan Township Treasurer before
March 1, 1972, to avoid penalty.**

ALL DOG LICENSES \$4.00

Rabies Vaccination papers must be presented in order to obtain license

FRED W. PEARSAL
SYLVAN TOWNSHIP TREASURER

14. Gift recipient
15. Slang term of endearment

16. Repeat
17. Subside
18. Prevaricate

19. Summer, in Paris
20. Had the

21. Accept

22. Accept

23. Accept

24. Accept

25. Accept

26. Accept

27. Accept

28. Accept

29. Accept

30. Accept

31. Accept

32. Accept

33. Accept

[illegible]

NOTICE

Township taxes on the following Fridays: Dec. 31, Jan. 14-28, Feb. 18-25. Those who

**All Dog Licenses must be paid to
Lima Township Treasurer before
March 1, 1972 to avoid penalty.**

HILDA PIERCE

NOTICE

from 9 a.m. to noon, and on any other day, my home, 16366 Farnsworth Rd., Stockbridge, Mich.; 2 to 7 p.m. only and please, no even acceptance of taxes or dog licenses. Those w

**All Dog Licenses must be paid to
Lyndon Township Treasurer on or before
March 1, 1972, to avoid penalty.**
ALL DOG LICENSES \$4.00

-NOTICE-

Main St., Chelsea, to collect Sylvan Townsh Taxes Monday through Friday, 8 a.m. to 5 p.m. until Feb. 20, 1972.

March 1, 1972, to avoid penalty.
ALL DOG LICENSES \$4.00
Rabies Vaccination papers must be presented in order to obtain license

SYLVAN TOWNSHIP TREASURER



BOWLING NEWS



Chelsea Lanes Mixed

Standings as of Jan. 21

	W	L
A.A. Centerless Grind	31	45
Morgan & Turner	72	54
Marsh & Eder	69	57
The Pub	68	58
Meabon's	68	58
Barkley & Gephart	65	61
Chelsea Lanes	64	62
Helm & Arrington	61	65
Bellinger Sanitation	59	67
Fitzsimmons Excavating	56	70
Jarvis & Goltz	47	78
Sable's Collision	46	80

Women's 150 games: D. Keizer, 190, 153; L. Gilmore, 189; B. Smith, 188, 159, 172; L. Alexander, 173; D. Eder, 165, 160; K. Gephart, 168; P. Gephart, 166, 167; L. Jarvis, 154; J. Longworth, 154; K. Arrington, 151.

Women's 450 series: B. Smith, 519; D. Keizer, 473; P. Gephart, 472; L. Gilmore, 462; L. Alexander, 454.

Men's 175 games: D. Eder, 221; R. Morgan, 214; R. Bauer, 204, 204; D. Alexander, 201; 180; L. Keizer, 190; J. Trapp, 190; L. Gephart, 183; D. Ellenwood, 189; A. Keizer, 188; T. Adams, 175, 194; M. Packard, 184, 176, 198; G. Heim, 184; J. Turner, 180, 184; T. Marsh, 176; G. Doyle, 175.

Men's 475 series: R. Bauer, 679; M. Packard, 588; D. Eder, 551; L. Gephart, 541; D. Alexander, 532; J. Turner, 532; J. Trapp, 524; A. Keizer, 525; D. Ellenwood, 498; T. Adams, 492; T. Marsh, 479; G. Heim, 477; J. Goltz, 476.

Charlie Brown and Snoopy's Friends Peanut League

Standings as of Jan. 22

	W	L
Snoopy Stars	39	12
Pin Crockers	38	13
Hamden Glohetrotters	31	20
Super Stars	24	27
Meat Balls	24	27
French Fries	23	28
Flintstones	15	36
Strikers	13	38

Series over 100: D. Seyfried, 172; D. Eisle, 147; M. Steinaway, 139; D. Waldyke, 178; B. Freeman, 135; R. Schultz, 119; D. McGill, 184; C. Umstead, 172; B. Ostrander, 130; J. Boyer, 143; C. Kalishchek, 144; S. Wilson, 187; T. Miller, 138; R. Klink, 145; J. Stock, 158; M. Alexander, 160; M. Sweet, 121; D. Thompson, 132; J. Atkinson, 121; T. Greenleaf, 135; M. Foster, 198; D. Bowen, 105; J. Krichbaum, 163.

Games 70 and over: D. Thompson, 78; J. Atkinson, 72, 89; T. Greenleaf, 81; M. Foster, 125, 73; D. Bowen, 80, 85; J. Krichbaum, 119; D. Seyfried, 88, 84; D. Eisle, 86; M. Steinaway, 77; D. Waldyke, 102, 76; B. Freeman, 74; D. McGill, 100, 84; C. Umstead, 88, 89; B. Ostrander, 70; J. Boyer, 75; C. Kalishchek, 76; S. Wilson, 95, 92; R. Klink, 72; J. Stock, 84; M. Alexander, 89, 71.

Leisure Time League

Standings as of Jan. 24

	W	L
Misfits	47 1/2	28 1/2
Plug Three	37	35
The Nags	36 1/2	39 1/2
The Mums	36	40
Alley Cats	36	36
Rug Rats	31	45

Over 140 games: D. Thompson, 175, 177; V. Wheaton, 146; S. Swanson, 168; S. Weston, 162; K. Haywood, 142, 142, 146; S. Centilli, 155; C. Snyder, 140; R. Williams, 151.

400 series: D. Thompson, 470; V. Wheaton, 409; K. Haywood, 430; S. Centilli, 402; R. Williams, 420.

Subscribe today to The Standard!

Chelsea Nite Owl League

Standings as of Jan. 24

	W	L
Steele's Heating	52 1/2	27 1/2
Pump & Pantry	50 1/2	29 1/2
Gambles	44	36
Chelsea Finance	44	36
Cavanaugh Lake Store	43	37
Foster's Men's Wear	41	39
Smith's AAA	37	43
Heller Electric	36	44
Ted's Standard	34	46
Arco Sparks	34	46
Jack & Son Barbers	32	48
McCalla Mobile Feeds	32	48

500 series: A. Fletcher, 557; A. Peterson, 551; G. Riethmiller, 544; K. Hartka, 535; G. Packard, 523; T. Schulze, 522; D. Alexander, 522; T. Steele, 518; M. Packard, 518; R. Smith, 517; J. Waldyke, 511; G. Miller, 506.

Chelsea Suburban

Standings as of Jan. 19

	W	L
Dairy Queen Braizer	50 1/2	29 1/2
Patty Ann	50	30
Dana	50	30
Prisinger Realty	45	35
Chelsea Lanes	44	36
Pittsfield Plastics	43 1/2	36 1/2
Poor Mobil	40	40
Artex Roll-Ons	36 1/2	43 1/2
Dancer's	32	48
Waterloo Garage	27	53
Chelsea State Bank	28	54
State Farm	25 1/2	54 1/2

150 games and over: K. Snyder, 197; P. Harook, 179, 164, 187; D. Kinsey, 161, 170; K. Chapman, 167; B. Hatley, 161, 174; M. Breitenweiser, 157; R. West, 197, 155; R. McGibney, 174; A. Wood, 152, 148; A. Hooking, 157; L. Beeman, 154; M. Olson, 166; W. Hafner, 157, 157; E. Schulz, 185; E. Miller, 171; N. Packard, 179, 160; J. Buku, 168, 157; B. Abdon, 166; D. DeLaTorre, 162, 163; G. Wilkerson, 189; M. Abdon, 169; S. Bowen, 181; N. Prater, 245, 150; N. Collins, 167; B. Smith, 156, 187; C. Peterson, 169; B. Fike, 169.

Charlie Brown & Snoopy's Friends Prep Division

Standings as of Jan. 22

	W	L
Good Guys	41 1/2	12 1/2
Pin Fighters	35	19
Bearcats	34	20
Strikers	29	22
Pros	26 1/2	27 1/2
Fantastic	28	28
Mustangs	19	35
Gullpups	18	36

Games over 100: B. Lewis, 102, 145; D. Craft, 160, 187; C. Sannes, 120, 132; D. Thompson, 124; K. Steinaway, 104; G. Packard, 126; B. Kalishchek, 123, 117; A. Kalishchek, 104, 115; B. Lovely, 123; R. Annabel, 116; A. Umstead, 111; C. Miller, 108; D. Alexander, 121; M. Schmidt, 111; T. Marsh, 125; J. Sweet, 105, 115; J. Boyer, 110, 125; M. Foster, 118, 155; B. McGibney, 130, 120; D. Packard, 123.

Series over 155: B. Lewis, 247; D. Craft, 297; C. Sannes, 252; D. Thompson, 218; G. Packard, 212; A. Umstead, 201; D. Alexander, 219; B. Kalishchek, 240; A. Kalishchek, 219; B. Lovely, 210; T. Marsh, 205; J. Sweet, 220; D. Packard, 221; J. Boyer, 235; M. Foster, 155; B. McGibney, 250.

Rolling Pin League

Standings as of Jan. 25

	W	L
Egg Beaters	54	30
Moppy Uppers	49 1/2	34 1/2
Spooners	49	35
Grinders	49	35
Mixers	45 1/2	38 1/2
Koolkie Kutters	42 1/2	41 1/2
Coffee Cups	42	42
Pots	38 1/2	45 1/2
Kitchen Kapers	38	46
Dish Rags	34	50
Jolly Mops	32	52
Brooms	30	54

400 and over series: J. Edick, 455; E. Williams, 412; J. Lewis, 432; G. Blaess, 412; J. Rabbitt, 426; E. Reynolds, 498; J. Priest, 530; P. Borders, 412; K. DelPrete, 499; G. Greenleaf, 441; P. Harook, 481; W. Waldeck, 410; N. Hill, 456; C. Shepherd, 448; J. Shepherd, 496; D. Butler, 444.

Junior House League

Standings as of Jan. 20

	W	L
Bobs Beefers	91	49
The Pub	89	51
J and S Tool	84	56
Wolverine No. 1	78	62
N. American Rockwell	69	71
Gambles	65	75
Jiffy Mix	64	76
Chelsea Lanes	63 1/2	76 1/2
Smith's AAA Service	63 1/2	76 1/2
B-D Sales & Service	63	77
Boyer Automotive	62 1/2	77 1/2
Wolverine No. 2	47 1/2	92 1/2

200 games: H. Kunzelman, 222, 213; A. Peterson, 231; S. Hopkins, 238; T. Wisniewski, 236; J. Risner, 213, 217, 212; E. Greenleaf, 203; T. Steele, 202; J. Hughes, 201; S. Policht, 200; J. Myning, 223, 203; R. Schenk, 219; W. DeMañ, 212; C. Keohgeter, 212; S. Dyer, 204, 207; F. Hoffman, 209, 208; L. Fahrner, 216; L. Sealyer, 208; N. Fahrner, 218, 213; R. Kite, 200; R. V. Worden, 222; B. Smith, 201.

500 series: H. Kunzelman, 617; J. Risner, 642; J. Myning, 621; F. Hoffman, 600; N. Fahrner, 606.

500 series: R. Semak, 519; G. Parker, 524; A. Peterson, 578; S. Hopkins, 545; T. Wisniewski, 591; B. Ring, 504; L. McKinnon, 512; E. Greenleaf, 579; T. Steele, 555; E. Marshall, 535; D. Buku, 514; J. Toma, 534; O. Johnson, 500; S. Policht, 543; A. Fletcher, 515; G. White, 519; R. Schenk, 539; W. Beeman, 573; C. Keohgeter, 537; R. Prater, 501; P. Dickinson, 501; S. Dyer, 577; L. Fahrner, 557; L. Salyer, 587; R. Kite, 535; J. Harmon, 511; R. V. Worden, 570; B. Smith, 566.

Chelsea Women's Bowling Club

Standings as of Jan. 19

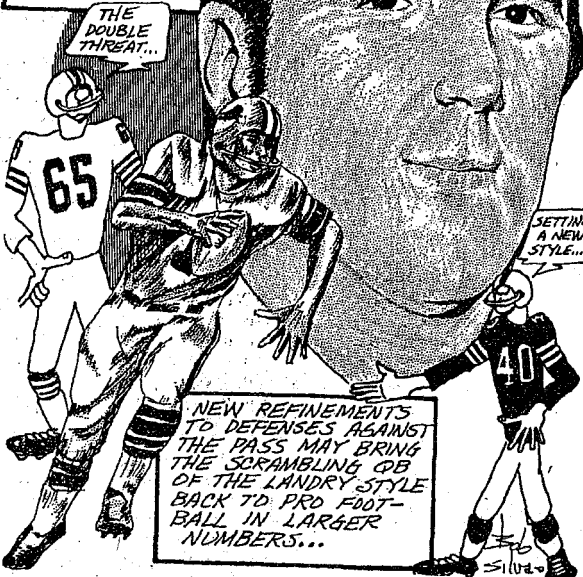
	W	L
Parish's Cleaners	62	18
Chelsea Milling	53 1/2	26 1/2
Chelsea Lanes	48 1/2	31 1/2
Wolverine Bar	46	34
Washtenaw Engr. Co.	45	35
Jiffy Market	45	35
Norris Electric	34	46
Schumm's	31	49
Schneider's Grocery	26	54
Community Serv. Press	25	55
N. American Rockwell	21	59

450 series or over: B. Fritz, 575; R. Hummel, 514; P. Poertner, 602; A. Boham, 497; A. Knickerbocker, 419; L. Orlovski, 478; D. Alber, 468; J. Norris, 459; G. Kuhl, 458; R. Lutovsky, 457; B. Larson, 457; M. E. Sutter, 456; D. Verwey, 455; N. Kern, 454.

150 games or over: B. Fritz, 187, 210, 178; R. Hummel, 170, 170, 174; P. Poertner, 195, 172; A. Boham, 192, 164; A. Knickerbocker, 155, 174, 150; L. Orlovski,

SPORTS CORNER

WIN THE DAY OF STRAIGHT BACK QUARTERBACKS WITH PROTECTIVE POCKETS, THE DETROIT LIONS' GREG LANDRY HAS BECOME ONE OF THE NFL'S BEST RUNNERS... THE DOUBLE THREAT...



NEW REFINEMENTS TO DEFENSES AGAINST THE PASS MAY BRING THE SCRAMBLING QB OF THE LANDRY STYLE BACK TO PRO FOOTBALL IN LARGER NUMBERS...

172, 169; D. Alber, 155, 153, 160; J. Norris, 200; G. Kuhl, 187; R. Lutovsky, 169, 159; B. Larson, 169; M. E. Sutter, 174, 157; D. Verwey, 160, 171; N. Kern, 160; S. Klink, 150; N. Popovich, 152; A. Fahrner, 168; L. Bradbury, 174; D. Toon, 155, 152; A. Alexander, 154; N. Mshar, 151; P. Abdon, 185; M. Kozminski, 156; M. A. Eder, 176, 151; S. Moore, 174, 154; L. Fouty, 153; B. Weeks, 159; L. Alexander, 166.

Hi Point Mixed League

Standings as of Jan. 18

	W	L
Dreadnaughts	421	315
Station WVPV	420	336
Four Squares	409	347
Ding-A-Lings	409	347
Alley Katz	406	350
Knock Outs	368	368
Jawyer Rats	364	392
Question Marks	359	247
Flat Tires	354	402
Daisy Riders	354	402
Hi Steppers	321	435
Holy Terrors	311	445

Men, over 450 series: F. Steers, 505; H. Morton, 531; M. Purdy, 504; D. Crum, 499; H. Schultz, 489.

Men, games over 160: D. Carpenter, 171; H. Schultz, 187, 160; P. Fletcher, 163; D. Crum, 156, 165; H. Morton, 163, 171, 197; M. Purdy, 165, 202; F. Steers, 178, 169.

Women, over 425 series: P. Crum, 455; W. Landwehr, 448; P. Patterson, 447; M. Paul, 427.

Women, over 150 games: S. Walton, 156, 153; P. Crum, 169, 165; M. Inbody, 150, 155; B. Bentley, 164; C. Klapperich, 163, 153; W. Landwehr, 159, 183; P. Patterson, 164; B. Barth, 158; M. Paul, 178.

400 series: D. Thompson, 470; V. Wheaton, 409; K. Haywood, 430; S. Centilli, 402; R. Williams, 420.

500 series or over: B. Fritz, 575; R. Hummel, 514; P. Poertner, 602; A. Boham, 497; A. Knickerbocker, 419; L. Orlovski, 478; D. Alber, 468; J. Norris, 459; G. Kuhl, 458; R. Lutovsky, 457; B. Larson, 457; M. E. Sutter, 456; D. Verwey, 455; N. Kern, 454.

Old Timers Bowling League

Standings as of Jan. 21

	W	L
Sportsman's Tavern	52 1/2	27 1/2
Team No. 16	48	32
Cloverleaf Lanes	45 1/2	34 1/2
Milan Screw Products	44 1/2	35 1/2
Has Been's	44 1/2	35 1/2
Job & Otto Standard	43	37
Sanford Security Serv.	41	39
Hotzel Service	41	39
Team No. 14	40	40
Colonial Lanes	39	41
Nelson Realtors	36	44
Merkel Furniture	36	44
Stein & Goetz	34 1/2	45 1/2
Dexter Bowl 'n' Bar	33	47
Ehms & Sons	33	47
Hartman Ins.	28 1/2	51 1/2

High team game and series: Sportsman's Tavern, 892, 2,598.

High ind. game: C. Bissell, 213.

High ind. series: L. Hall, 547.

Other 200 games, 500 series and over: H. Brown, 209; W. Tyrakowski, 204; S. Mathews, 202; R. McCleery, 202; B. Elliott, 200; J. Otto, 668; F. Menerey, 543; A. Kasier, 639; W. Tyrakowski, 540; C. Bissell, 538; C. Adama, 531; S. Mathews, 519; B. Elliott, 517; H. Brown, 512; F. Fishlock, 513; N. Wenk, 510; B. Moore, 509; A. Frank, 506; W. Wysocki, 506; G. Haines, 508; G. Lawrence, 602.

Soil Conservation District Will Elect Two Directors

The 2nd annual meeting of the Washtenaw County Soil Conservation District will be held Wednesday evening, Feb. 2, at 9 p.m. The meeting will be held at the Pittsfield Grange Hall located south of Ann Arbor on Ann Arbor-Saline Rd.

Featured speaker for this event will be the Rev. Keith L. Hayes, pastor of the First United Methodist church of Mason. His presentation is entitled "Sense and Nonsense" and is made up of a series of humorous stories about people and amusing things that have happened during his ministry.

Two directors will be elected at the meeting to serve three-year terms. Candidates for the offices are Lloyd Braun, Ann Arbor; Andrew Maffett, Dexter; Kendall Rogers, Saline, and George Sunal, Ypsilanti.

Special musical entertainment will be provided during the meeting by a brass quartet from Saline High School.

A luncheon will be held following the meeting. Attendance at the annual meeting, as well as the luncheon, is free and advance reservations are not required. Anyone interested in conservation is invited to attend.

An impressive appetizer for a beef standing rib, rib eye (Delmonico) or sirloin tip roast dinner is beef bouillon or consommé on the rocks.

Women, high series: J. Norris, 565.

Women, 150 or over games: L. Knerr, 206; J. Norris, 182, 189, 194; D. Sannes, 156; N. Collins, 182, 186, 187; E. Koengeter, 174, 166; C. Timmerman, 164; J. Buku, 168, 180; L. Graf, 182, 158, 180; L. Alexander, 162; S. Moore, 186; P. Huston, 211, 167.

Women, 450 or over series: P. Huston, 510; J. Buku, 471; L. Graf, 520; N. Collins, 535; E. Koengeter, 459; J. Norris, 665.

Men, high series: J. Elliott, 200.

Men, 175 or over games: G. Scripser, 184; R. Schmidt, 193; T. Steele, 184; O. Timmerman, 187; E. Trinkle, 179; D. Alexander, 175, 190; J. Elliott, 189, 200.

Men, 500 or over series: D. Alexander, 532; J. Elliott, 543; A. Sannes, 500.

The Chelsea Standard, Thursday, January 27, 1972 9

Michigan Airport Operations Decline

Lansing—The state-wide total of landings and takeoffs at Michigan's 12 major airports declined by four percent during 1971 compared to the previous year, the Michigan Commerce Department's Aeronautics Commission reports.

The Aeronautics Commission said the total number of operations at Michigan's control tower airports decreased from 1,862,799 in 1970 to 1,791,608 in 1971. Only three of the 12 airports had increases in their total operations in 1971—Reynolds Municipal at Jackson, Capital City at Lansing and the Muskegon County Airport.

The 12 airports have control towers that operate around-the-clock throughout the year and tabulate all landings and takeoffs. The Aeronautics Commission said the slowdown in activity at the 12 airports was a reflection of the general downturn in the national economy in 1970.

Ice Follies?

Hardy members of Leningrad's Walrus Club plunge into the Neva River every day of the year, even when the temperature dips down to 20 degrees below zero F., and a channel must be hacked in the ice.

Ridiculed Trappers

Hudson's Bay Company trappers were the first Europeans to see Plains Indians hunting buffalo from horseback. Their accounts were ridiculed by officials and settlers convinced that Indians couldn't ride.

BOWL for the fun of it...

Having Fun Lately? Bowling Is a Ball!

Put some fun in your life... Bowl for laughter and health at our modern, well-equipped lanes with rarely a wait. Bring the gang down!

CHELSEA LANES
1180 M-52 Phone GR 5-8141

SING-ALONG MUSIC at INVERNESS INN
NORTH LAKE
Saturday Nights - 9:30 p.m. to 1:30 a.m.
Music By
JIM ROM

**AGRICULTURE
IN ACTION**by Carl P. Kentner
MICHIGAN FARM BUREAU**★ Farm Forecast**

Many people have been forecasting the economic outlook for the 1972 year. Agriculture has not been exempt from the forecasts.

After the loud objections to and the confirmation of the new Secretary of Agriculture, Dr. Butz made his own forecast concerning agriculture's future in 1972. Secretary Butz has forecast that gross farm income for 1972 will rise about \$2 billion over the 1971 level to about \$60 billion. He also predicted that net farm income for the year would increase by about \$1 billion to \$16.7 billion. If this happens, it will be an all time high record for both gross farm income and net farm income.

Secretary Butz also forecasted that farm exports, which slumped to roughly \$7 billion in 1971 from \$7.8 billion in 1970, may rise to more than \$8 billion this year, assuming there will be no dock strikes, which played a role in reducing last year's exports.

For some time farmers have been faced with increased costs of items needed to produce food and fiber and very little change in the price received for their produce. This has resulted in the farmer being caught in a price-cost squeeze which has driven his net income down. Some forecasters are predicting a brighter spot on the outlook of farm input costs. It has been estimated that the farmers' cost of production items in 1972, such as machinery and fertilizer, will only increase something in the neighborhood of 2½ percent, but not as much as the customary 5 to 7 percent in the past. This is in line with the wage-price guidelines suggested price increase of 2½ percent.

Some forecasters have predicted an increase of up to 5.3 percent per hour for the average factory worker but only a 4 percent increase in farm cash income.

Farm prices have been long overdue for an increase to just meet the increased costs of production. Forecasters can forecast better farm income in 1972, but only an increase in the final tally at the end of the year can help farmers.

**Jan. 31 Deadline
For Employers
Quarterly Report**

Detroit—Employers have an important tax deadline Monday, Jan. 31, 1972.

This is the last day for reporting Social Security and withholding income taxes for the calendar quarter ended Dec. 15, according to Thomas A. Cardozo, District Director of Internal Revenue for Michigan.

Employers who received a pre-addressed Form 941, "Employer's Quarterly Federal Tax Return," should use this form to report their tax liability. If this is not available, obtain blank copies from your local IRS office.

Jan. 31 is also the last day to report and pay any balance of Federal Unemployment Tax not over \$100 for 1971, using Form 940. A deposit is required with FTD Form 508 if the balance of tax due exceeds \$100.

"Circular E—Employer's Tax Guide," Publication 15, furnishes detailed information on these taxes. The handy publication may be obtained free, in person or by mail, from your IRS district office.

**Evening First Aid
Classes Scheduled**

The Washtenaw County Chapter of the American Red Cross announces a daytime Standard First Aid class has been scheduled. This is a unique opportunity for those who cannot attend the usual evening First Aid classes.

The class is designed to meet the everyday emergencies one might encounter. Life-saving skills will be taught, and accident prevention will be stressed.

Standard First Aid will begin Wednesday, Feb. 2. It will meet from 9 a.m. till 11 a.m. every Wednesday for five weeks. All classes are held at the Red Cross Operations Center, 2729 Packard Rd., Ann Arbor.

There is no charge for the course. All interested persons are welcome to attend with the only pre-requisite being that one must be 14 years of age.

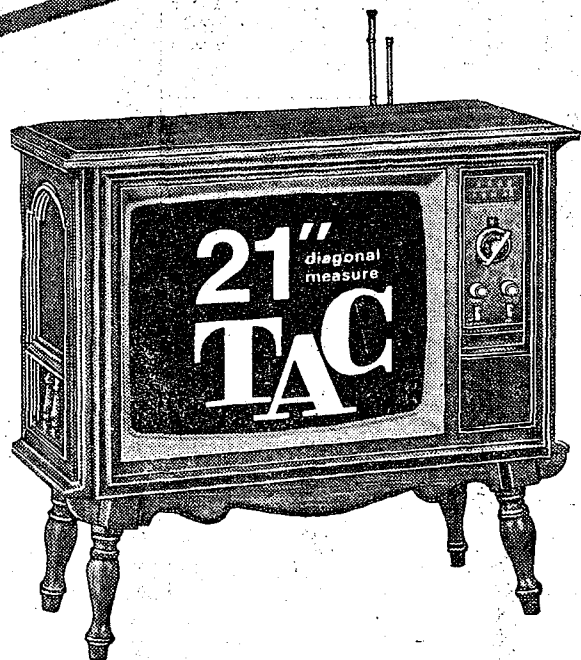
To register, please call the Red Cross at 971-5300 during business hours (8:30 a.m. till 5 p.m.).

**MSU Expanding Its
Chicano Programs**

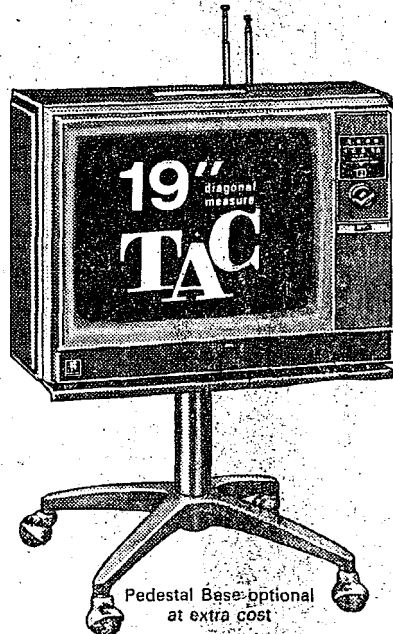
East Lansing—Michigan State University will strengthen its educational services on behalf of Chicanos through a number of new efforts announced recently by President Clifton R. Wharton, Jr.

Dr. Wharton listed 48 specific steps ranging from the naming of Chicanos to key administrative advisory positions to redoubled recruiting efforts.

The MSU president said the university would make reviews of its programs for Chicanos and other minorities a continuous operation.

HEYDLAUFF'S**MAGNAVOX FACTORY-SPONSORED****SAVE \$51
NOW \$448**

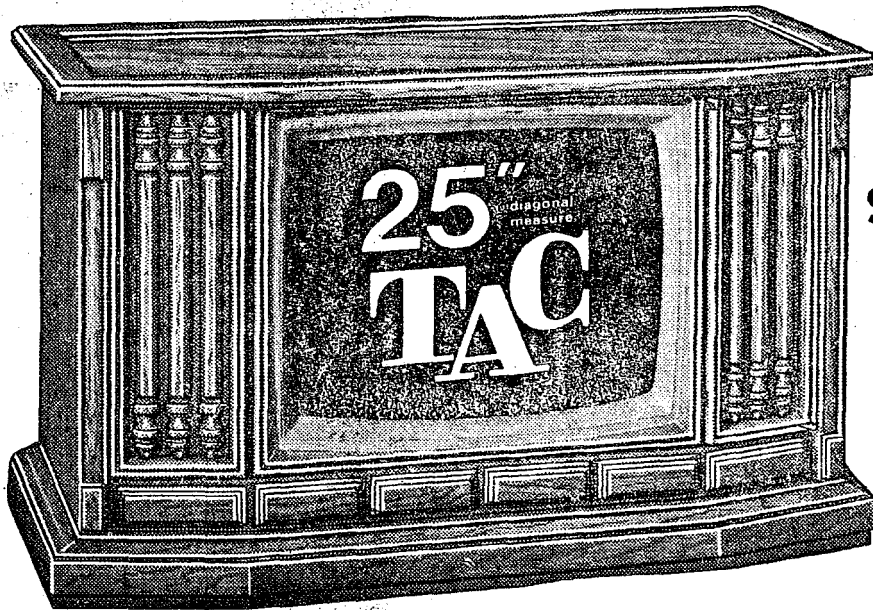
Space-saving console styling . . . plus the wonderful convenience of the Magnavox Total Automatic Color System, as well as the brighter, sharper pictures on a Matrix Tube—are all yours to enjoy with Early American styled model 6334! You may also choose from compact and beautiful Contemporary and Mediterranean styling. Your choice.

Pedestal Base optional
at extra cost

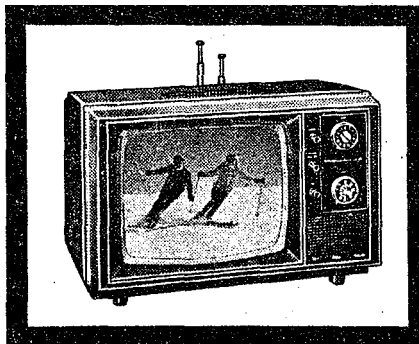
**Magnavox Total
Automatic Color TV
in a variety of screen
sizes & styles.**

SAVE \$31 NOW \$398

Kick the annoying TV tuning habit . . . with TAC, the amazing electronic system that automatically keeps flesh tones natural and pictures sharp. There's no more jumping up to adjust controls . . . and no more green or purple faces! Model 6278, shown on optional mobile pedestal base, also has a Matrix Picture Tube for brighter, sharper pictures. Also telescoping dipole antenna and carrying handle. Enjoy it anywhere.

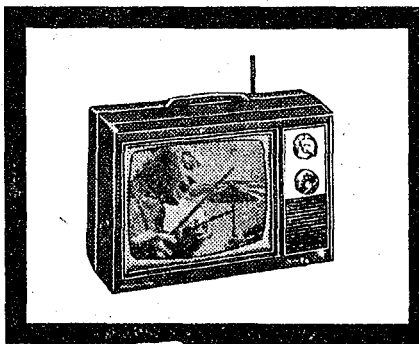
**SAVE \$101
\$598 Your choice
of three styles**

Magnificent to see—on or off! Model 7186, in beautiful Mediterranean breakfront styling will bring you superb viewing with the Magnavox Total Automatic Color System, and the Matrix Picture Tube . . . and will enhance your home with fine furniture. The front controls are concealed by a decorative door. Early American and Contemporary styles, too. Also save on UHF/VHF Remote Control.



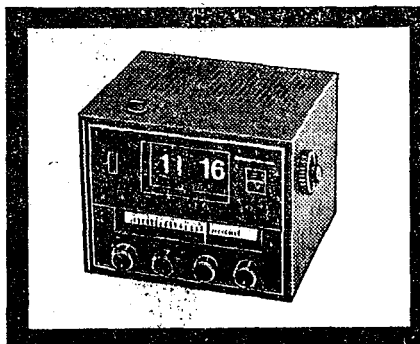
Simulated TV picture.

SAVE \$21 on slim and trim portable Color TV model 6112 with 12" diagonal measure pictures, telescoping dipole antenna and convenient retractable carrying handle. Perfect on tables, shelves or bookcases—anywhere!
NOW \$248

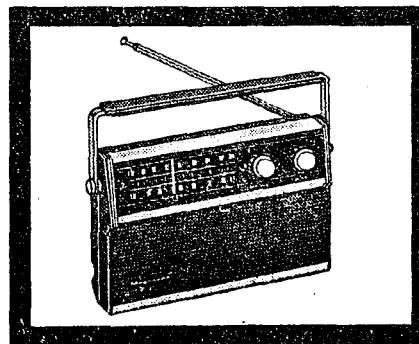


Simulated TV picture.

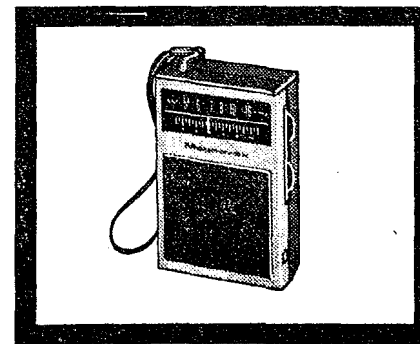
SAVE \$5 on slim-and-trim portable TV model 5010 and enjoy 12" (diagonal) sharp pictures. With telescoping dipole antenna and convenient carrying handle—it's perfect anywhere . . . in any room in your home. See it today.
NOW \$84⁹⁵



SAVE \$5 on FM/AM digital clock radio model 1782 with illuminated radio dial and flip-type clock, switchable FM/AFC, wake-to-music and wake-to-alarm controls, plus a convenient AM and PM 24-hour alarm set. See it now!
NOW \$39⁹⁵



SAVE \$3 on FM/AM portable radio model 1253 with FM/AFC, telescoping FM antenna, slide rule dial and Vernier Tuning, plus jack for optional AC adaptor. Earphone and batteries included. It goes anywhere you do.
NOW \$21⁹⁵



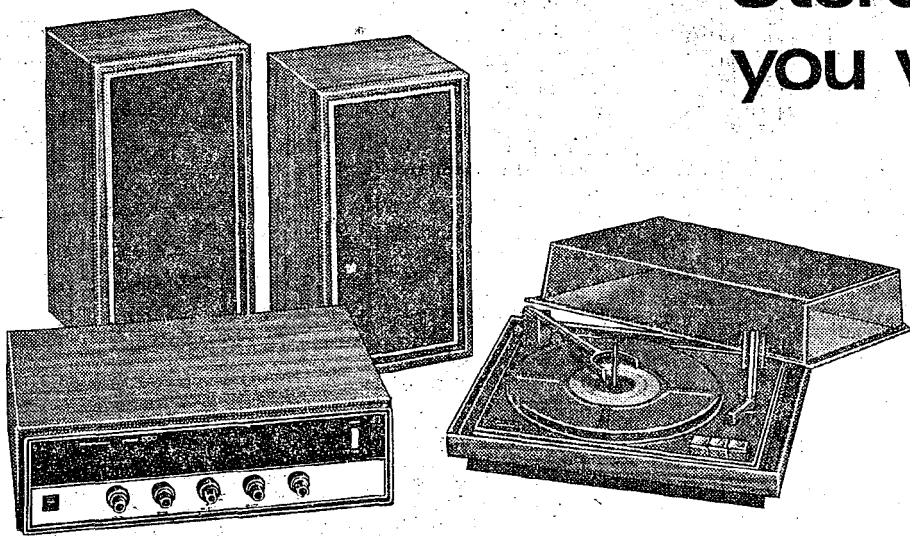
SAVE \$1 on AM portable radio model 1008. Only 4½" high, it offers big room-filling sound. Easy to read slide rule dial with Log Scale and Vernier Tuning, built-in antenna. Earphone and batteries included. Take it wherever you go.
NOW \$7⁹⁵

HEYDL**113 North Main St., Chelsea**

ONCE-A-YEAR ANNUAL SALE

**SAVE \$25
NOW \$224⁹⁵**

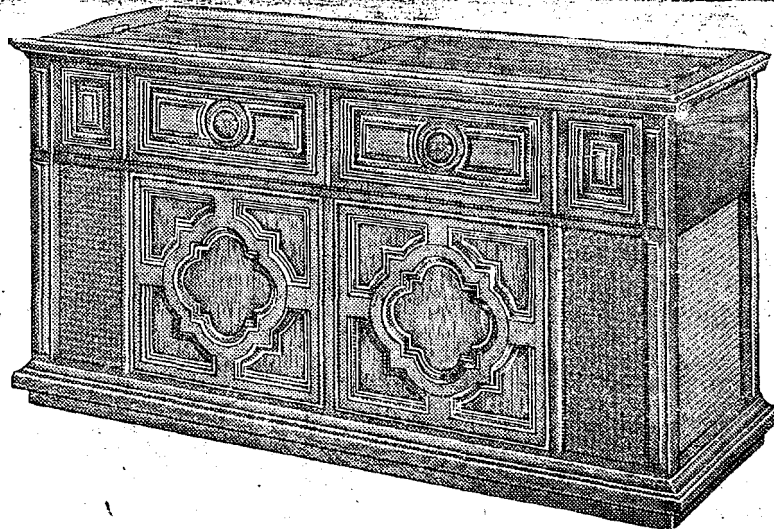
Stereo FM/AM Radio-Phono System—model 9290 offers great Magnavox sound plus wonderful versatility. 20-Watts EIA music power, an Air-Suspension System with two High-Compliance 6" and two 3½" speakers, plus the precision Automatic Mark I record player. There are even jacks for optional tape equipment and headphones. Dust cover included.



**Magnificent Magnavox
Stereo...any way
you want it!**

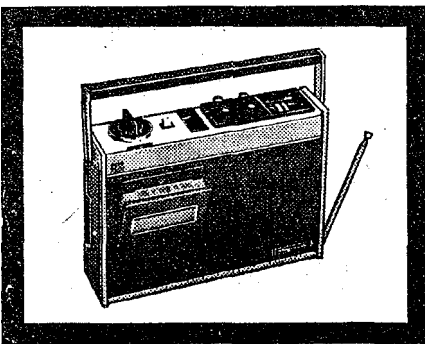
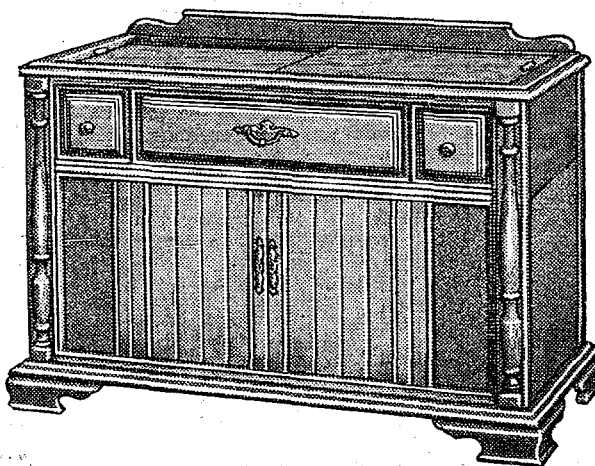
**SAVE \$51
NOW \$328**

Astro-Sonic Stereo FM/AM Radio-Phono—in beautiful Mediterranean styling. Model 3673 will bring you the full beauty of music—with 20-Watts EIA music power, two High-Efficiency 10" Bass Woofers and two 1,000 Hz. Exponential Horns, plus the Micromatic player. Modern, Early American, Italian Classic and French Provincial styles, too.



**SAVE \$51
NOW \$248**

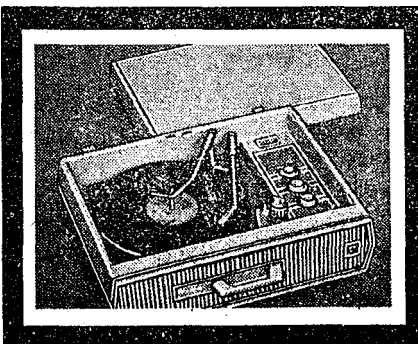
Compact solid-state stereo FM/AM Radio-Phono—in finely crafted Early American styling. Although modestly priced, quality has not been sacrificed! Model 3422 will delight you with its big sound and tonal quality. 15-Watts EIA music power, four high fidelity speakers, plus Automatic Mark I record player. Contemporary and Mediterranean styles are also available. Your choice of three.



SAVE \$10

on FM/AM Radio/Cassette Recorder AC/DC model 9041. FM/AFC, auto level, telescoping FM antenna, battery and level meters, tone control, cassette eject, record monitor, end of tape alarm. Batteries, cassette.

NOW \$89⁹⁵



SAVE \$5

on self-contained portable stereo phono model 2511 with two 6" speakers, a precision automatic player, tone and left and right channel controls. Ruggedly-built, it will go anywhere you go for great listening enjoyment.

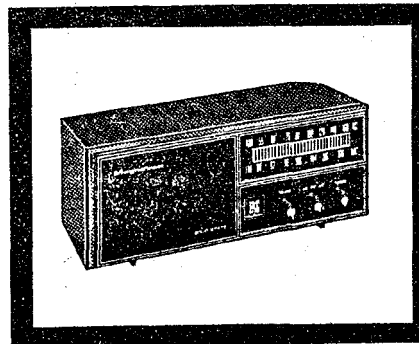
NOW \$59⁹⁵



SAVE \$5

on superb performing 8-Track Cartridge Player with complete installation kit having angled wood frame, cloth to match console's interior, plus self-adhesive vinyl, all screws and connecting cable. Easily installed, model 9069.

NOW \$54⁹⁵



SAVE \$3

on FM/AM radio model 1703 with switchable no-drift FM/AFC, automatic volume control, easy-to-read slide rule dial with Vernier Tuning, built-in FM and AM antennas, plus jack for optional private-listening earphone.

NOW \$19⁹⁵

Magnavox

Now is the best time to purchase that magnificent Magnavox you've always wanted... because during this once-a-year event most Magnavox models are substantially price-reduced with truly significant savings. Buy now... and enjoy all the built-in performance and reliability features that have made Magnavox a leader in the field of finest quality electronics for over sixty years.



RONNIE C. BOBBETT

Grass Lake Youth Chosen Outstanding Airman of Quarter

Sacramento, Calif. — Airman First Class Ronnie C. Bobbett, son of Mr. and Mrs. Charles R. Bobbett, 500 South St., Grass Lake, Mich., has been named Outstanding Airman of the Quarter at Mather AFB, Calif.

Airman Bobbett, a missile electrical systems specialist, was selected for his exemplary conduct and duty performance. He serves with a unit of the Strategic Air Command, America's nuclear deterrent force of long range bombers and intercontinental ballistic missiles.

The airman, a 1967 graduate of Grass Lake Junior-Senior High School, attended Jackson (Mich.) Community College and Michigan State University.

TV Newsmen To Analyze Election '72

East Lansing—NET Playhouse begins a new series of biographies with an adaptation of the popular off-Broadway play, "To Be Young, Gifted and Black," at 11 p.m. Sunday, Jan. 30, on WMSB (Channel 40), Michigan State University television.

The play, starring Ruby Dee, depicts the life and works of the late black playwright Lorraine Hansberry. The author of the play, Robert Nemiroff, Miss Hansberry's husband, calls the production his wife's story "in her own words."

Miss Hansberry, who died of cancer in 1965, was the youngest American and the first black to win the New York Drama Critics Circle Award. She received the honor in 1959 for the play "A Raisin in the Sun." The play was later made into a movie and won a Cannes Film Festival Award.

ELECTION '72

Veteran television correspondents Sander Vanocur and Robert MacNeil report, review and analyze the presidential election year on a new series, A Public Affair Election '72, premiering at 7:30 p.m. Friday, Feb. 4.

This weekly report of campaign activities follows the progress of presidential hopefuls and their successes or failures in state primaries, as well as focusing on the issues that shape public opinion—economy, law and order, foreign policy, national goals, and the war.

For further insight, the journalists provide an objective view of the strategies of partisan politics—campaign financing, political poll-taking, candidate image-making, party conventions and platforms.

COLLEGE SYMPOSIUM

Dr. Walter Adams moderates a panel discussion by the participants in the fifth annual University College Symposium, at 11:30 a.m. Monday, Jan. 31.

The symposium itself covers three days and features talks by U.S. Rep. John Conyers; former U.S. Sen. Joseph Clark; Roland Stromberg, professor of history at the University of Wisconsin; and David Dickson, professor of English, State University of New York.

On the program, the four will discuss the topic of this year's symposium, "On Human Justice." Rep. Conyers, a democrat representing Michigan's First Congressional District (Detroit), is currently serving his fourth term in the House. He has been extremely active in civil rights movements and as a sponsor of civil rights and low income aid legislation.

Joseph Clark served in the U.S. Senate from 1956 to 1968. During his 12 years in the Senate he consistently supported measures calling for international co-operation as opposed to international conflict.

Roland Stromberg has written numerous publications on European history and thought. He was the recipient of a Rockefeller Foundation grant in 1958 and received a Distinguished Alumnus Award from the University of Missouri in 1966.

David Dickson is, in addition to being a professor, the assistant to the president, State University of New York. He formerly taught at Michigan State University, receiving a Distinguished Teaching Award from MSU in 1951. He has also served as dean of the School of Arts and Sciences and vice president for academic affairs at Northern Michigan U.

A U F F ' S

PHONE 475-1221

Wrestlers of the Week



LARRY HOPKINS, left, and STEVE STRAUB are wrestling their second and first years, respectively, for the Bulldog varsity matmen. Hopkins, a senior, has also earned a varsity letter in football. He is a member of the Future Farmers of America (FFA) and enjoys hunting. He will attend MSU, majoring in agriculture next year. He is

the son of Mr. and Mrs. Jay Hopkins, 16975 M-52, Grass Lake. Straub, a sophomore, has wrestled for two years, one of them on the varsity team. He is a reporter for the FFA and president of Faith Lutheran Youth. He plans to attend college, possibly to study veterinary medicine. He is the son of Mr. and Mrs. G. J. Straub, 6969 Madden Rd.

Methodist Home Residents Treated To Real Old Fashioned Magic Show

Residents of the Chelsea Methodist Home witnessed the magical feats of Mandrake the Magician Wednesday night, complete with illusions and proof that the hand is quicker than the eye.

The program was sponsored by the Superior Ambulance Service and St. Joseph Mercy Hospital and performed by staff members from both organizations.

Mandrake, also known as Steven Webb, hails from the rich magical

heritage of Colon, "Magic Capital of the World." Webb and his assistants developed the program about two months ago to provide a show unique and different from the entertainment program previously established by the two organizations.

Harry Hayden of the Superior Ambulance Service said the performers will be touring area nursing homes and organizations with their services. For more information, contact Hayden at 769-2300.



DEN 7, PACK 445

We worked on a Cub Scout tumbling act for the pack meeting. Our den mother showed us how to make place name cards for the Blue and Gold supper. We are to make these with our family at home.

PACK 445, DEN 7

We practiced a braiding roll for gymnastics. The boys are to cut part of a Christmas tree for a centerpiece. We made robins out of clay.

Shawn Pierson, scribe.

DEN 13, PACK 435

Last week we brought in coffee cans to make bird feeders. We also used metal pie plates. We each got a bag of bird seed. We each took our bird feeder home and put it outside. Now we are supposed to watch to see what birds come to the feeder and write down their names.

Three boys are going into Webelos this pack meeting. They are David Morris, Brad Knickerbocker, and Kirk Meyers. Brad Knickerbocker brought the treats.

John Thornbury, scribe.

PACK 415

At the Cub Scout meeting of Pack 415 Tuesday, Jan. 25, Dens 1 and 6 and Webelos opened the meeting with the flag ceremony.

Cubmaster Blaine Lyle introduced the new Cubmaster, Gene Ahrens.

The Blue and Gold dinner was discussed and it will be Sunday, Feb. 20, at the high school cafeteria.

Kelly Krieger received his athletic and sportsman awards. Bryan Herrick received his geologist, citizen and traveler awards and David Seyfried received his athlete award.

Mr. Ratzloff, new Webelos leader, will hold meetings on Saturdays from 1 to 3 p.m.

The meeting was closed with the candlelight ceremony by Webelos leader Gary Packard and the Webelos.

Next community meeting will be Thursday, Feb. 3, 8:00 p.m., at the home of Jerry Herrick.

Services in Our Churches

ST. PAUL UNITED CHURCH OF CHRIST
The Rev. Warner Siebert, Pastor
Sunday, Jan. 29—
9:00 a.m.—Junior High confirmation program.
Sunday, Jan. 30—
9:15 a.m.—Church school.
10:30 a.m.—Worship service.
12:30 p.m.—Worship service.
7:30 p.m.—Women's Fellowship Board.
Tuesday, Feb. 1—
12:00 p.m.—Mission Club pot. luck.
Wednesday, Feb. 2—
8:15 p.m.—Chancel Choir.
Mailing committee for Courier articles due.

ST. THOMAS EVANGELICAL LUTHERAN
Ellsworth and Haab Rds.
The Rev. Daniel L. Mattson, Pastor

Thursday, Jan. 27—
8:00 p.m.—Choir rehearsal.
Saturday, Jan. 29—
9:00 a.m.—Confirmation class.
Sunday, Jan. 30—
10:00 a.m.—Worship service.
11:00 a.m.—Sunday school and Bible class.

Monday, Jan. 31—
8:00 p.m.—Altar Guild.
Tuesday, Feb. 1—
8:00 p.m.—Church council.
Wednesday, Feb. 2—
1:30 p.m.—Ladies' aid.

ST. MARY CATHOLIC CHURCH
The Rev. Fr. Francis Wahowiak, Pastor

Every Saturday—
7:30 p.m.—Mass.
Every Sunday—
Masses at 6:30 a.m., 8:00 a.m., 10:00 a.m., and 11:30 a.m.

OUR SAVIOR LUTHERAN CHURCH
1616 S. Main St.
The Rev. William H. Keller, Pastor

Every Sunday—
9:00 a.m.—Sunday school.
10:30 a.m.—Worship service.
Every Tuesday—
3:30-5:00 p.m.—Confirmation I.

Every Thursday—
4:00 to 5:30 p.m.—Confirmation II.
Every Saturday—
9:00 a.m.-11:00 a.m.—Confirmation III.

FIRST ASSEMBLY OF GOD CHURCH
The Rev. Thode B. Thodeson, Pastor

Every Sunday—
9:45 a.m.—Sunday school.
11:00 a.m.—Worship service.
7:00 p.m.—Evangelistic service.
Every Wednesday—
7:00 p.m.—Midweek services.

NORTH SHARON COMMUNITY BIBLE CHURCH
Sylvan and Washburn Rds.
The Rev. William Ensen, Pastor

Every Sunday—
10:00 a.m.—Sunday school.
11:00 a.m.—Worship service.
6:30 p.m.—Young People's service.

Every Wednesday—
7:30 p.m.—Prayer meeting.

GREGORY BAPTIST CHURCH
The Rev. Grant Lapham, Pastor

Every Sunday—
10:00 a.m.—Worship service.
11:15 a.m.—Church school.
6:30 p.m.—Baptist Youth Fellowship.

7:30 p.m.—Evening worship service.

CHELSEA BAPTIST CHURCH
337 Wilkinson
The Rev. James Stacey, Pastor

Every Sunday—
9:45 a.m.—Sunday school.
11:00 a.m.—Worship service.
Nursery care available during all services.

6:00 p.m.—Junior and Senior Baptist Youth Fellowship.
7:00 p.m.—Evening service.

Every Wednesday—
7:00 p.m.—Bible study and prayer meeting.

FIRST UNITED METHODIST CHURCH
The Rev. Clive Dickens, Pastor

Saturday, Jan. 29—
9:00 a.m. to 4:00 p.m.—Dixboro United Methodist Church Council on Ministries workshop, in educational unit.

Sunday, Jan. 30—
9:00 a.m.—Church school, 4 years through adult.
10:00 a.m.—Worship service.
Special offering for Fund for Reconciliation.

11:15 a.m.—Intermediate Choir.
2:00 p.m.—Junior High UMYF family snow party. Meet at church. Senior high skating party.
Wednesday, Feb. 2—
3:30 p.m.—Primary Choir.
4:00 p.m.—Junior Choir.
8:00 p.m.—Youth and Adult Choir.

ST. BARNABAS EPISCOPAL CHURCH
20550 Old US-12
The Rev. C. Walton Fitch, Vicar
Telephone 426-8815

Every Sunday—
9:15 a.m.—Holy Communion.
9:15 a.m.—Morning Prayer, second and fourth Sundays.

ZION LUTHERAN CHURCH
Corner of Fletcher, Waters Rds. (Rogers Corners)
The Rev. John R. Morris, Pastor

Thursday, Jan. 27—
7:15 p.m.—Junior Choir.
8:00 p.m.—Senior Choir.

Saturday, Jan. 29—
Youth classes.
Sunday, Jan. 30—
9:00 a.m.—Sunday school.
10:15 a.m.—Worship.

7:00 p.m.—Luther League.
Wednesday, Feb. 2—
7:45 p.m.—Women of Zion, general meeting.

CONGREGATIONAL CHURCH
(United Church of Christ)
The Rev. Paul Gerhart, Pastor

Every Sunday—
9:00 a.m.—Senior High Sunday school.
9:45 a.m.—Sunday school.
10:00 a.m.—Morning worship.

FIRST UNITED PRESBYTERIAN CHURCH
Unadilla
The Rev. T. H. Liang

Every Sunday—
9:45 a.m.—Sunday school.
11:00 a.m.—Worship service.
Every Tuesday—
8:00 p.m.—Choir practice.

WATERLOO FIRST UNITED METHODIST
Parks and Territorial Rds.
Mrs. Altha Barnes, Pastor

Every Sunday—
9:15 a.m.—Morning worship.
10:30 a.m.—Sunday school.
First and Third Saturdays—
7:00 p.m.—Youth Fellowship at Village church Sunday school house.

IMMANUEL BIBLE CHURCH
145 E. Summit St.
The Rev. LeRoy Johnson, Pastor.

Every Sunday—
9:45 a.m.—Sunday school, nursery provided.
11:00 a.m.—Morning worship, nursery provided.

7:00 p.m.—Evening service.
Every Wednesday—
Family hour, prayer meeting and Bible study.

BETHEL EVANGELICAL AND REFORMED CHURCH
(United Church of Christ)
Freedom Township
The Rev. Roman A. Reineck

Every Sunday—
10:00 a.m.—Worship.
10:00 a.m.—Sunday school.

CHURCH OF CHRIST
13661 Old US-12, East
Lionel S. Burger, Minister

Every Sunday—
10:00 a.m.—Church school.
11:00 a.m.—Worship service.
6:00 p.m.—Worship service.

Every Wednesday—
7:30 p.m.—Bible Study.

ST. JOHN'S EVANGELICAL AND REFORMED CHURCH
(United Church of Christ)
Francisco
The Rev. Robert Townley, Pastor

Every Sunday—
10:00 a.m.—Worship service.
10:20 a.m.—Sunday school.

ST. JOHN'S EVANGELICAL AND REFORMED CHURCH
(United Church of Christ)
Rogers Corners
The Rev. David J. Kleis, Pastor

Every Sunday—
9:30 a.m.—Sunday school.
10:30 a.m.—Morning worship.

SALEM GROVE UNITED METHODIST CHURCH
The Rev. Harry Weeks, Pastor

Every Sunday—
10:00 a.m.—Sunday school.
11:00 a.m.—Worship service.

VILLAGE UNITED METHODIST CHURCH OF WATERLOO
8118 Washington St.
Mrs. Altha Barnes, pastor

Every Sunday—
10:00 a.m.—Sunday school.
11:15 a.m.—Morning worship.
First and Third Saturdays—
7:00 p.m.—Youth Fellowship at Village Church Sunday school house.

CHELSEA MEDICAL CENTER
Every Wednesday—
1:30 p.m.—Worship service.

NORTH LAKE UNITED METHODIST CHURCH
The Rev. Harry Weeks, Pastor
Every Sunday—
9:30 a.m.—Worship service.
10:30 a.m.—Sunday school.

ST. JACOB EVANGELICAL LUTHERAN CHURCH
12501 Riethmiller Rd., Grass Lake
The Rev. Andrew Bloom, Pastor
Every Sunday—
9:00 a.m.—Sunday school.
10:15 a.m.—Divine services.

BAHAI FIDESIDE
Every Thursday—
8:00 p.m.—At the home of Toby Peterson, 705 S. Main St.
Anyone wishing to learn about the Baha'i faith is welcome.

FIRST CHURCH OF CHRIST, SCIENTIST
1883 Washtenaw Ave., Ann Arbor
Sunday, Jan. 30—
10:30 a.m.—Sunday school.
10:30 a.m.—Morning service.
Lesson-sermon: "Love."

4-H Clubs
GARFIELD GANG
Our meeting was called to order by the 4-H pledge. We talked about hair. Then we looked at the plans for our doll house that is going to the retarded children. We looked at samples of rugs and wallpaper. Julie Botford made a motion to end the meeting. Jamie seconded it.
Cathy Villemure, reporter.

ANN ARBOR YM-YWCA CHELSEA CLASSES — Mid-Winter 1972

The Ann Arbor YM-YWCA is again opening its Thursday classes to interested Chelsea students. Classes meet once a week for eight weeks. The first class session is Thursday, February 10. The last session is Thursday, April 6. Class will NOT be held Thursday, March 30.

The "Y" bus will arrive at South School at 3:15 p.m. to pick up students and will continue to North School, the last stop being Beach School. The bus should arrive at the "Y" by 4:00 p.m. Cost of bus transportation will be \$6.00 per student. If more than one student in a family desires transportation, EACH SUBSEQUENT STUDENT PAYS \$3.00 (A maximum fee of \$12.00 per family). Bus will leave the "Y" at approximately 6:00 p.m. and will be at the High School between 6:30 p.m. and 6:45 p.m.

This is not a school project. It is an extracurricular activity such as Scouts or church work. If you would like to participate, send the attached form to the Ann Arbor YM-YWCA as soon as possible.

THE FOLLOWING CLASSES ARE BEING OFFERED:

INSTRUCTIONAL SWIMMING: Aquatic Club instruction is based upon the swimming ability of the child. Our instructional swimming program follows the National YMCA Progressive Aquatic Program from basic techniques through advanced swimming skills.

310. Tadpole-Int. Beg.	Thursday	4:00 - 4:30 p.m.
318. Minnow-Adv. Beg.	Thursday	4:30 - 5:00 p.m.
327. Fish - Intermediate	Thursday	4:00 - 4:30 p.m.
328. Fish - Intermediate	Thursday	5:00 - 5:30 p.m.
335. Flying Fish	Thursday	4:30 - 5:00 p.m.
341. Shark - Advance	Thursday	5:30 - 6:00 p.m.
FEE: (G.A.) \$1.50 (Basic) \$4.50 (C/M) \$5.50		

FENCING: For those interested in learning the art of fencing. This exciting sport combines agility, poise and sportsmanship. Basic skills such as advance, retreat, simple parries and simple attacks will be taught. All equipment will be furnished.

360. Beginning	Thursday	4:00 - 5:00 p.m.
361. Int. & Adv.	Thursday	5:00 - 6:00 p.m.
FEE: (G.A.) \$8.00 (Basic) \$10.00 (C/M) \$11.00		

FLOOR HOCKEY (Boys): An exciting new game which is readily mastered by children as young as eight.

364.	Thursday	4:00 - 5:00 p.m.
FEE: (G.A.) \$2.50 (Basic) \$5.00 (C/M) \$6.00		

GYMNASTICS (Boys and Girls): Boys and girls will be divided into groups of not more than 10 according to ability. Emphasis will be on various forms of tumbling. Some basic skill of gymnastic apparatus (parallel bars; rings, horizontal bars, side horse, vaulting, balance beams, uneven parallel bars, etc.) will be stressed.

369. Gymnastics	Thursday	4:00 - 5:00 p.m.
370. Gymnastics	Thursday	5:00 - 6:00 p.m.
FEE: (G.A.) \$4.50 (Basic) \$6.50 (C/M) \$7.50		

WHAT TO WEAR:
Boys must wear gym shorts and "T" shirt.
Girls may wear either gym uniform or leotards.

JUDO: Judo is one of America's fastest growing sports. It emphasizes physical conditioning and a healthy mental attitude.

384. Beginning	Thursday	5:00 - 6:00 p.m.
388. Int. & Adv.	Thursday	4:00 - 5:00 p.m.
FEE (G.A.) \$6.00 (Basic) \$8.00 (C/M) \$9.00		

MEMBERSHIP INFORMATION

GENERAL ACTIVITY (G. A.)	Total Fee
Youth (1st grade or 6 years to 18 years)	\$23.00
BASIC	
Youth (1st grade or 6 years to 18 years)	\$10.00

CLASS MEMBERSHIP (C/M) entitles a student to participate in the program for the length of the class session. The fee is indicated with each class.

TRAMPOLINE (Grades 1-12, Boys & Girls): Learn the fundamentals of trampoline on one of the "Y's" two "tramps."

395. Beginning	Thursday	5:00 - 6:00 p.m.
FEE: (G.A.) \$3.00 (Basic) \$6.50 (C/M) \$7.50		

BALLET: The techniques of ballet acquaints the student with the exercises designed to improve muscular coordination and agility for movement in rhythm-dance. The classes introduce the exercises for movement of stretching, gliding, jumping, kicking, and running including the vocabulary of classical dance.

303b. Beginning I	Thursday	5:00 - 6:00 p.m.
FEE: (G.A.) \$5.50 (Basic) \$9.50 (C/M) \$10.50		

MODERN DANCE: Trip the light fantastic with leaps, jumps, hops, and spins. Learn balance, coordination, and poise as rhythm fills the air. Create your own dance. Open to grades 1-8.

307b.	Thursday	4:00 - 5:00 p.m.
FEE: (G.A.) \$5.00 (Basic) \$8.00 (C/M) \$9.00		

CANDLE MAKING: Pour, dip, sculpt, and mold a variety of candles using stones, sand, colored glass and incense. **FOUR WEEK CLASS!**

125.	Thursday	5:00 - 6:00 p.m.
FEE: (G.A.) \$3.50 (Basic) \$5.00 (C/M) \$6.00		

CHESS: Dreaming of Knights and Castles? Learn the basic techniques of chess through individualized instruction.

130.	Thursday	4:00 - 5:00 p.m.
FEE: (G.A.) \$5.00 (Basic) \$8.00 (C/M) \$9.00		

COOKING II (ages 9 & up): This class will make a food tasting trip around the country. First stop — New England for a taste of chowder — after that down South for some Creole food. Join us, won't you?

132.	Thursday	4:00 - 5:00 p.m.
FEE: (G.A.) \$6.00 (Basic) \$9.00 (C/M) \$10.00		

COPPER ENAMELING: This fascinating craft involves applying powdered glaze on copper and firing the piece in an enameling kiln. You will have an opportunity to make jewelry, a bowl, and a small plaque.

134.	Thursday	4:00 - 5:00 p.m.
FEE: (G.A.) \$7.00 (Basic) \$10.00 (C/M) \$11.00		

FRENCH: Parlez-vous francais, jeunes filles et garçons? Learn to converse in French. Child must be at least in the second grade.

137.	Thursday	4:00 - 5:00 p.m.
FEE: (G.A.) \$4.50 (Basic) \$8.50 (C/M) \$9.50		

MODEL BUILDING: Design and build model airplanes, boats, or cars from balsa wood or plastic materials. Materials for the first model will be provided.

144.	Thursday	4:00 - 5:00 p.m.
FEE: (G.A.) \$5.50 (Basic) \$8.50 (C/M) \$9.50		

WOODWORKING (ages 6-8): Learn how to handle tools and build simple and useful projects.

156.	Thursday	5:00 - 6:00 p.m.
FEE: (G.A.) \$6.00 (Basic) \$9.00 (C/M) \$10.00		

ANN ARBOR YM-YWCA - CHELSEA CLASSES

MID-WINTER REGISTRATION FORM 1972

Name _____ Phone _____

Address _____ (Street) _____ (City) _____ (Zip Code) _____

School Attending _____

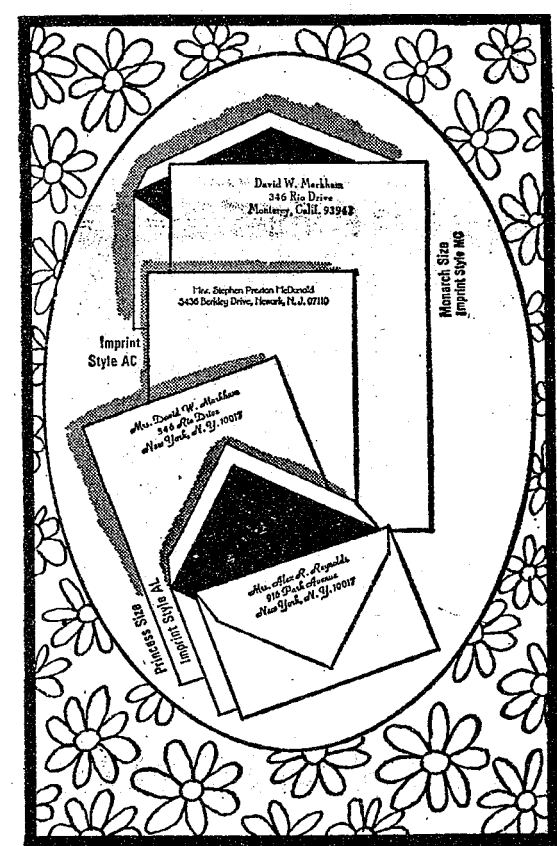
Age _____ Type of Membership: G. A. _____ Basic _____ C/M _____

Class & Number _____ Time _____ Fee \$ _____

Class & Number _____ Time _____ Fee \$ _____

Class & Number _____ Time _____ Fee \$ _____

Total Amount Enclosed \$ _____ plus Bus Transportation Fee, \$ _____



Rytex Personalized Stationery Double the Usual Quantity

RYTEX FLIGHT

Now \$5.85

(regularly \$9.90)

A medium-weight paper with a discreet laid-mark pattern. Envelopes are lined-in-blue to keep messages confidential. Ideally suited for air-mail. Choice of crisp white or blue paper with printing in bluest-blue ink. Printing style choice as shown. 150 princess sheets & 100 matching envelopes or 100 monarch sheets & 100 matching envelopes.

Bonus Value

An additional 50 matching unprinted sheets for use as second pages (regularly \$1.50) now only \$1 with your order.

The Chelsea Standard

MAIL ORDER COUPON

THE CHELSEA STANDARD
CHELSEA, MICH. 48118

RYTEX FLIGHT _____ boxes at sale price of \$5.85 per box

SPECIAL BONUS: ☐ (check) include 50 matching, unprinted, sheets for only \$1.00 a box more.

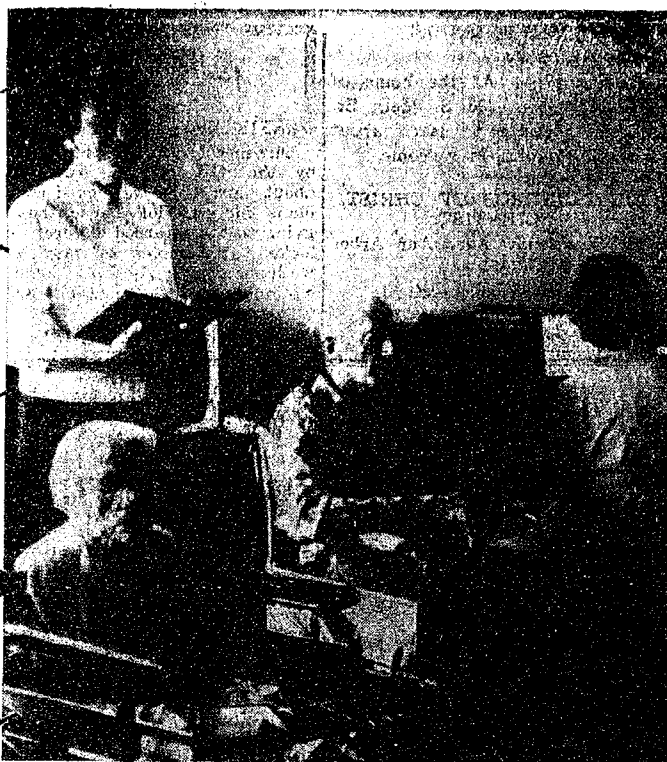
CHECK ☐ Princess WHITE (6200) ☐ Monarch WHITE (6400)
CHOICE: ☐ Princess BLUE (6250) ☐ Monarch BLUE (6450)
BLUE INK ONLY Imprint choice: ☐ HL ☐ MC ☐ MP

Imprint Name _____
Street _____
City _____ State _____ Zip _____

Ordered by: _____
Street _____
City _____ State _____ Zip _____

☐ Charge ☐ Check or M. O. enclosed \$ _____
Sorry, no C.O.D.'s (Please include sales tax)

THE BIBLE ANSWERS



SONG FEST: Chelsea United Methodist Home residents (seated) Miss Heacock and the Rev. Robert Bryce, join in the singing with volunteer workers Mrs. Helen Pearson (standing) and pianist Mrs. Tina Salmonson.

Methodist Home Seeks More Volunteers in Recreation Areas

The Chelsea United Methodist Home is seeking volunteers to work with the members of the Home, Mrs. Evelyn Pannone, volunteer director said Monday.

At present, only 12 or 15 are active volunteers, with other occasional helpers.

Volunteer work entails working with the Home members in the areas of crafts, visiting and gen-

eral recreation. Many of the residents enjoy making articles such as rag rugs, pillows and designs for tablecloths, Mrs. Pannone said. She said the most popular recreation is singing, and musical programs are very well received.

Those interested in learning more about the volunteer program may attend a meeting Feb. 1 at 10 a.m. in the B-1 lounge at the Home.

Patricia Gilbert Earns All A's at WMU

A 1970 Chelsea High school graduate was named to the fall quarter Dean's List at Western Michigan University.

To receive recognition, a student must earn at least a 3.5 grade point average on a 4.0 scale.

Honored was Patricia Dee Gilbert, daughter of Mr. and Mrs. John D. Gilbert, Rt. 2, Gregory. Miss Gilbert was also among 287 WMU students earning all A's, or a 4.0 average.

Lisa Rae Peffers, Edward Blacklaw Are Married in Saturday Ritual

Lisa Rae Peffers and Edward T. Blacklaw exchanged wedding vows Saturday, Jan. 22, at the Westminster Presbyterian church, Ann Arbor, with the Rev. Charles J. Gensheimer officiating.

The bride is the daughter of Mr. and Mrs. Ray H. Peffers, Ann Arbor, and the bridegroom's parents are Mr. and Mrs. Edward Blacklaw, Chelsea.

Performing the duties of maid of honor was Miss Valerie Lind, say, Holland. Bridesmaids were Mrs. Terence J. Pokela, Ypsilanti, and Miss Maralyn Peffers, Ann Arbor, both sisters of the bride, and Mrs. Kenneth Beauchamp, Chelsea, sister of the bridegroom.

Best man, Kenneth Beauchamp, is the brother-in-law of the bridegroom. Seating the guests were Keith Kusterer and Wayne Stahl,

both of Chelsea, and Dennis Turner, Ann Arbor.

Among those attending the ceremony were the bride's maternal grandparents, Mr. and Mrs. Lincoln, Sturgis, and her paternal grandparents, Mr. and Mrs. Ross Peffers, Sault Ste. Marie.

A reception was in the fellowship hall of the church following the ceremony.

The bride is a 1971 graduate of Chelsea High school and attended Butterworth School of Nursing. Last fall she attended Grand Rapids Junior College. The bridegroom is now enrolled at Washtenaw Community College, and is a 1969 Chelsea High school graduate. The couple is residing at Sugar Loaf Lake in Chelsea.

The bride was also honored at pre-nuptial showers in Chelsea and Grand Rapids.

Jana Lee Wade, Darrell Williams Wed Friday at St. Paul Church

St. Paul United Church of Christ was the setting for the wedding of Jana Lee Wade and Darrell Williams, Friday, Jan. 14. The Rev. Warner Siebert officiated at the 7:30 p.m. ceremony.

The bride is the daughter of Mr. and Mrs. William D. Wade, 47 Butternut Ct., and the bridegroom's parents are Mr. and Mrs. Forest Williams, 4111 Morton Rd., Stockbridge.

The bride, given in marriage by her parents, appeared in a gown of white tulle and Venice lace styled with a high neckline and long sleeves. Complementing the A-line gown was a waist-length mantilla with matching Venice lace.

The bride carried a bouquet of carnations and sweetheart roses

in shades of lavender, pink and white.

The maid of honor, Miss Jane Oesterde, wore a dress of lilac velvet with short, puffed sleeves. Bridesmaids Miss Brenda Seitz, Robin Williams, sister-in-law of the bridegroom, and Judy Terrill wore deep purple velvet gowns styled the same as that of the maid of honor. All the attendants wore flowers in their hair.

Performing the duties of best man was the bridegroom's brother, Harold Williams. Ushers were Jasim, both brothers of the bride, Joe Williams and Junior Williams, both brothers of the bridegroom.

The bride's mother chose a mint green A-line dress with crystal accessories for her daughter's wedding and wore a corsage of tangerine roses. The bridegroom's mother wore a gold knit suit with brown accessories with a corsage of white roses.

Among the guests were the bride's grandmother from Traverse City, and other relatives from Detroit, Hastings, Jackson, Stockbridge and Traverse City.

A reception at the Fair Service Center followed the ceremony. Jacquie Bailey attended the guest book, Mrs. David Watson cut the cake and Tina Orthing and Pat Young served punch.

The couple resides at 825 Glazier Rd.

Phoebe Circle Installs Officers For New Year

Phoebe Circle of the United Methodist church held a dessert luncheon Jan. 19. Mrs. Lyman Adams was hostess and Mrs. Clarence Lillie and Mrs. Winifred Coffey were co-hostesses for 12 members and one guest.

Mrs. Robert Harris, circle chairman, conducted the business meeting.

Devotions from Psalm 139: 35-36 were given by Mrs. George Stanford.

The Rev. George Stanford presided over installation of officers. New officers are, chairman, Mrs. Robert Harris; secretary, Mrs. Guy Weatherwax; treasurer, Mrs. Ray Schairer; program chairman, Mrs. Thomas Smith; sunshine chairman, Mrs. Lyman Adams; telephone contactor, Mrs. Harry Pruden.

The treasurer's report and a card from Mrs. Lloyd Merrell were read. A motion was approved to purchase the book, "I Remember, I Remember." The book will be placed in the church library in memory of Mrs. Fannie Chambers.

Mrs. V. O. Johnson invited the circle to "A Happening" at the home of Mrs. George Palmer from 9 to 11 a.m., 2 to 4 p.m. and 7:30 to 9:30 p.m., Jan. 26. Mrs. Ray Schairer will have a presentation for each session.

Mrs. Ben Donaldson, past chairman, donated \$5 to the circle and members sent a gift of money to one of Mrs. Donaldson's favorite charities.

The circle voted to continue its assistance to the Heart and Hand House in West Virginia.

Next meeting will be Feb. 16, 1 p.m. at the home of Mrs. Smith, with Mrs. Ramsey as co-hostess. Mrs. Alba Solomonson will be in charge of the program.

VIVIANE WOODARD COSMETICS

475-8785

Dorothy Orthing, Director

Ruth Circle Hears About Sponsorship of Vietnamese Child

Ruth Circle of the First United Methodist church met Jan. 19 at 1 p.m. in the church social center. Twenty members were present.

A dessert luncheon was served by Mrs. Roy Bohena and Mrs. Carl Schlosser.

Mrs. Douglas Hoppe opened the meeting with a prayer, followed by the monthly business meeting.

Mrs. Dan Ewald presented the program and told about the 12-year-old Vietnamese girl, Thai Tarang, the Ewalds have been sponsoring through "The Christian Children's Fund."

Thai lives in Saigon with her widowed mother and brothers and sisters. Mrs. Ewald showed a picture of Thai and members read several letters she had written to her American friends.

Correspondence between Saigon and Chelsea is translated by the Children's Fund agency, and then both the original and translated letters are forwarded to the receiver.

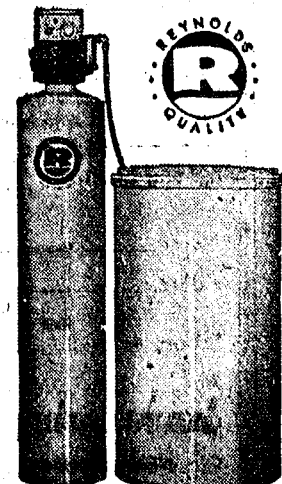
Recently the Ewalds were notified that their sponsorship of Thai had been canceled because conditions in Saigon make it nearly impossible to keep in contact with children there. The Ewalds are now sponsoring a 12-year-old Indonesian girl.

Ruth Circle will meet again Feb. 16, at 1 p.m. in the social center. Mrs. George Knoll and Mrs. Clark Bushnell will be hostesses. Program leader will be Mrs. Ralph McCalla.

Although America's sweet tooth last year didn't set a record, sugar usage was up. The per capita consumption of 102.3 pounds was attributed to the ban on cyclamates and a larger youth market.

NOW YOU CAN RENT SOFT WATER

The Carefree Way!



Now, for the first time, you can rent a famous, multi-purpose Heavy-duty REYNOLDS Fully-Automatic Water Conditioner that removes iron-rust the "CAREFREE" way.

New low rental rates:
Standard size only \$6.00 per mo.
Large size only \$8.00 per mo.

Rentals applied toward purchase, when desired
Investigate the very best in water conditioning... no obligation.

Serving Washtenaw County since 1931
REYNOLDS WATER CONDITIONING CO.
12100 Cloverdale Detroit, Michigan 48204
Michigan's oldest water conditioning company

Call our direct factory line without charge 1-800-552-7717

Woman's Club

Woman's Club of Chelsea met Tuesday, Jan. 25, in the club room of McKune Memorial Library. Two guests and 18 members were present.

Mrs. Lynn Blecha presented the program, "Travels of an Air Force Wife." She shared her experiences while stationed with her husband in Europe.

Hostesses for refreshments were Mrs. Thomas McClear and Mrs. Harold Spaulding.

Next activity will be a Valentine tea at the United Methodist Home, Feb. 8.

Subscribe today to The Standard!

The Chelsea Standard, Thursday, January 27, 1972 13

SUBURBANETTES

Chelsea Suburbanettes' study club met Jan. 20 at the home of Mrs. Melvin Leach.

After a short business meeting, there was a "white elephant" and bake sale to raise money for club service projects.

February's meeting will be at the home of Mrs. Leona Kuhl. Refreshments were served by the hostess and her co-hostess, Mrs. Arthur Paul.

For a tasty chip or cracker dip, combine finely diced, ready to serve meat, ham, or dried beef with sour cream and chopped olives.

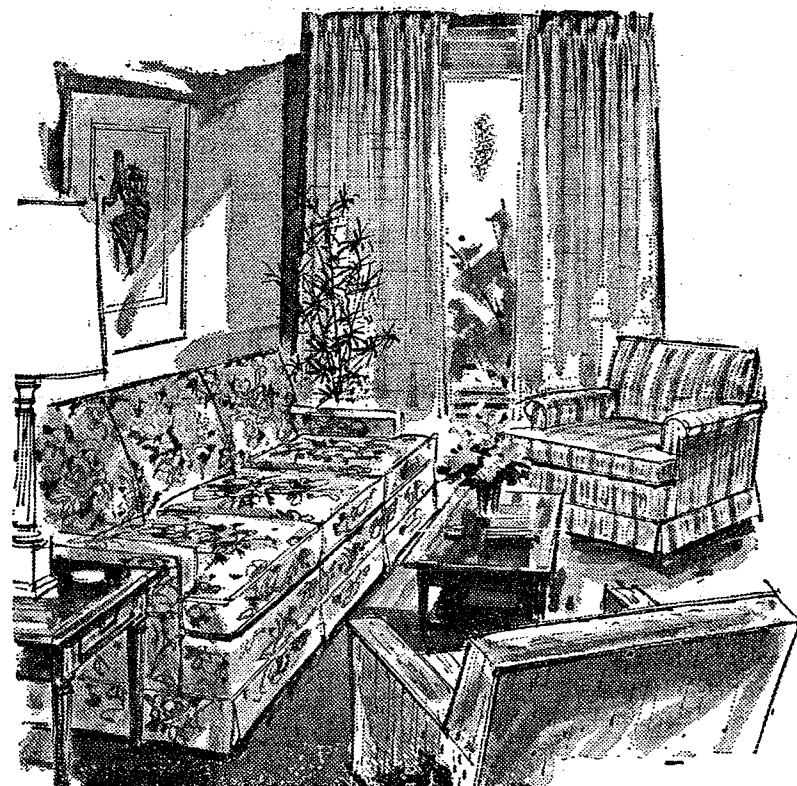
Telephone Your Club News To GR 5-3581.

Magic Mirror Beauty Salon

Open Monday thru Friday
9 a.m. to 9 p.m.
Saturday, 8 a.m. to 3 p.m.

PHONE 665-0816

HURRY! LAST 3 DAYS TO SAVE



SINCLAIR DRAPERIES

SAVE 20%

ALL CARPET

SAVE 10%

ALL FURNITURE

SAVE 10% to 40%

SALE ENDS SAT., JAN. 29

Merhel

HOME FURNISHINGS

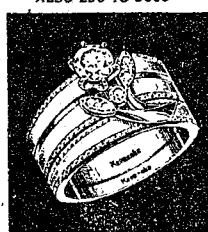
VILLAGE BEAUTY SALON

LORETTA - CINDY - EULA
MARGE - ARLENE - SARAH

107 N. MAIN PHONE 475-5421
OPEN MONDAY THRU SATURDAY
Evenings By Appointment



LAVIER \$500
ALSO 250 TO 5000



CASTLEAIRE \$375 TO 450
WEDDING RING 175



ALEXANDRA \$175
WEDDING RING 87.50



PEYAL TRIO \$220
ALSO TO \$100
WEDDING RING 34.75
MAN'S RING 50

When you know it's for keeps

Being together is really what it's all about... so tell the world with a Keepsake diamond ring. Pick your style from our swinging Keepsake selection... and get a lifetime of perfect diamond quality.

Keepsake®
REGISTERED DIAMOND RINGS



WINANS JEWELRY

Cager of the Week



JOHN MANN, junior, has been playing basketball for five years. This is his first year as a varsity Bulldog cager. The 6-foot guard also has played varsity football for one year and has been named a tri-captain for the gridder's 1972 season. Mann has also earned a varsity letter in baseball. He enjoys camping, skiing and swimming and plans to attend college after graduation. He is the son of Mr. and Mrs. Paul E. Mann, 687 Flanders.

Home Economics Study Groups Calendar

Feb. 1 — North Superior Study Group, at the home of Mrs. Fred Schmid, 6164 Plymouth Rd.

Feb. 2 — Geddes Study Group, at the home of Mrs. Karl Koch, 3900 Earhart Rd., 12 noon.

THE HOVERTRAIN

London—The hovertrain, the revolutionary British designed train, has been designed to ride on a cushion of air. Developed at a cost so far of \$12.5 million, it is expected to open a new era in land travel.

Detroit — Ford vice-president Edgar Molina has revealed they submitted to the government of South Vietnam a proposal to assemble Ford vehicles in that country.

Potato Growers Will Vote on Research, Promotion Plan

Potato producers in all 48 contiguous states of the nation will vote Feb. 1-10 to determine whether a nation-wide Potato Research and Promotion Plan should

be approved. This announcement was issued today by Washtenaw county Extension Agent Don son.

Gunshots Cause Electric Interruptions

Electric service interruptions because of gunshot damage to a Consumers Power Co. 46,000-volt transmission line providing service to areas adjacent to Grass Lake, Michigan Center and the Village of Chelsea occurred twice last week.

Frank Brewer, Jackson division manager for Consumers Power, said both cases of gunshot damage were deliberate.

He reiterated the company's \$500 reward offer for information leading to the conviction of anyone who deliberately shoots or in any way damages company facilities.

Brewer said that on Jan. 18 a company patrol discovered gunshot damage to an insulator and a section of wire on the line between Grass Lake and Michigan Center. Repair crews were able to replace the damaged area without removing the line from service completely, but there were reports of momentary interruption, and a drop in voltage, during the repair period.

For instance, the Village of Chelsea, which receives its power in bulk from Consumers Power for distribution by the village, reported a number of low-voltage complaints.

On Jan. 20 the same line went out of service just after noon, interrupting the power supply to customers in the Michigan Center and Grass Lake areas for 40 minutes, and causing voltage problems in the Chelsea area as well. Final repairs to damage, which included a gunshot insulator and two burned crossarms on the pole, were completed by 5:03 p.m.

Brewer pointed out that the interruptions and related service problems were the result of deliberate acts of vandalism, and asked that any citizen observing people damaging lines contact police officials or the company immediately.

"Vandalism of this kind doesn't hurt the company nearly as much as it inconveniences the company's customers," Brewer said. "These two gunshot incidents alone cost many hours of lost time in the factories and stores which suffered service interruptions, and great inconvenience to homes and schools in the area," he added.

The program would be financed by an assessment of up to one cent per hundred weight of potatoes handled. Handlers would be permitted to collect assessments from producers, but producers not wishing to contribute would be reimbursed upon written request.

To become effective, the plan must be approved by at least two-thirds of the producers voting, or by a majority of the producers voting if they produce two-thirds or more of the potatoes grown by those voting.

Indian Maidens Plan Numerous Winter Activities

Chippewa Indian Maidens are planning an ice skating party, hike, gymnastics, swimming and a camp-in at the YMCA.

The group was formed in November and meets every two weeks. Five Big Taus and six maidens formed the original group.

Mrs. Judy Durgan, Silver Feather, is chief, and her maidens are Linda, Gold Feather and Gena, Blue Feather. Mrs. Connie Lyle, Prancing Deer, is tribe medicine man. Her maiden is Colleen, Running Deer. Mrs. Muriel Boyd, Many Thunders, is wampum bearer and her maiden is Kim, Thunder Lightning. Mrs. Alice Thornton, Big Dipper, is tallykeeper. Her maiden Cinda is Little Shooting Star. Mrs. Katherine Kramer, Morning Dove, is in charge of Indian lore and her maiden is Diane, Little Fawn.

Little maidens have earned their headband feathers, bear claws and have made wampum pouches. Beads were awarded to the maidens Jan. 25 for their achievements of last month. Running Deer told a story of how the Chippewa tribe gathered wild rice and Prancing Deer served brown rice sweetened with maple sugar, a food of the Chippewas.

More information about the program is available from Mrs. Judy Durgan, 475-1285.

Karry Kargel on Grand Valley State Wrestling Team

A Chelsea High School graduate and former CHS varsity wrestler, Karry Kargel, is in the line-up for the Grand Valley State College wrestlers for a match against Lake Superior State College, Saturday Coach Jim Scott has announced.

According to Coach Scott, this match is one of the most important of the season. Kargel, wrestling at 165, will take on the Lakers' Jim Fallis, last year's national runner-up and NATA All-American.

Kargel is a 1969 Chelsea High school graduate and has three years of college wrestling experience—two at Grand Rapids Junior College and one at Grand Valley.

He majors in art and plans to graduate from Grand Valley in 1973. He is the son of Mr. and Mrs. Clarence Kargel, 14400 Island Lake Rd.

Subscribe today to The Standard!

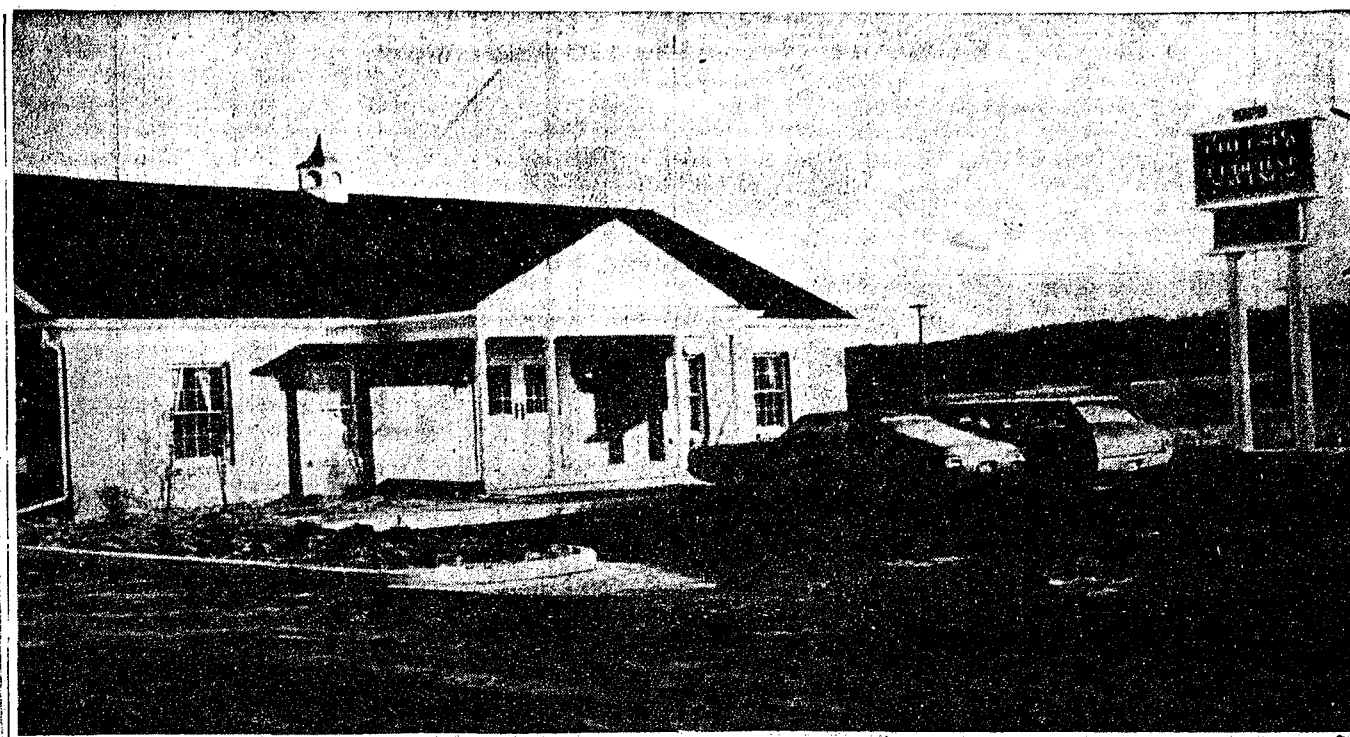
YES

WE ARE MAKING
LONG-TERM FARM
REAL ESTATE
LOANS

SEE US

Federal
LAND BANK
Association

P. O. Box 1005
Ph. 769-2411 3645 Jackson Rd.
Ann Arbor, Mich. 48108



GRAND OPENING: Ann Arbor Federal Savings opened its Chelsea branch office located at M-52 and Old US-12, this week. The new facility offers a drive-up window and modern electronic equipment. During grand opening this week, Ann Arbor Federal

will have on display historic photographic exhibits of the Chelsea area and will donate this exhibit to McKune Memorial Library for the use of community schools and civic organizations.

St. Louis School Notes

Students at the St. Louis School for Exceptional Boys hosted the Senior High Youth Fellowship from St. Paul United Church of Christ Sunday for an afternoon of scrimmage basketball and a social hour.

Guests were accompanied by Mr. and Mrs. Tim Whitesall, Mr. and Mrs. Toby Butcher and the Rev. and Mrs. Warner Siebert. The basketball game was refereed by the Rev. Siebert and refreshments followed.

Also on Sunday, St. Louis students were visited by a group of clowns in full costume, from an Ann Arbor service club. The entertainers provided balloons and games for the boys.

Saturday 20 boys from Boysville, in Macon, visited St. Louis for a basketball game. Games and recreation followed the game, and the students from Boysville treated St. Louis boys to candy bars purchased from their own savings.

The St. Louis basketball team with Fr. Umberto, traveled to Tecumseh Junior high school for a game Monday, with the St. Louis cagers winning three out of four quarters of play.

Mrs. Wilkinson, accompanied by her class of 15 and Fr. Fortunato, visited the Chelsea police station where Sgt. McCormick gave the boys a tour off the jail, explained

the use of some firearms and the police radio and discussed aspects of law enforcement.

Last week, Maj. Reed from Eastern Michigan University's Military Science Department discussed the Vietnam war with St. Louis students. Maj. Reed instructs ROTC cadets at the university and will soon return to Vietnam where he spent 10 years.

St. Louis students will leave for week-end visits at their homes Friday and return to the school Sunday.

Boy Scouts

TROOP 476—

Boy Scout Troop 476, accompanied by seven adults, traveled to Ann Arbor Sunday afternoon for a swim at the YMCA pool.

Accompanying the scouts were Duane Hall, Ray Worden, Charles Stoner, Vern Hiltz, Lloyd Hafner, Howard Baker and Sumner Oesterle.

Scouts participating in the outing were Steve Blaess, Jim, David and Pete Stahl, Mike Stoner, Mike and Steve Schanz, Jon Oesterle, Tony and Lee Hafner, David and Don Hall, Jim Bollinger, Mike Rowe, Pat Smith, Bob Heydlauff and Steve Worden. Don Oesterle, scribe.

Spending for automobiles is can displaceable income as compared with 8 percent in France, Transportation and communication 9 percent in Germany and 12 percent in Britain.

FOR PROFIT

Profit-Producing Feeds For Livestock, Poultry

In our complete line of Fortified Feeds, you'll find the right feeds to keep livestock and poultry growing, gaining and producing.

Farmers' Supply Co.

Phone GR 5-5511

MILK

THE PROTEIN SNACK

Teenagers think that milk tastes

"just terrific"

Socializing, alone, or with the gang, anytime is the right time for a teenager to help himself to a delicious glass of healthful milk.



There's a world of health in a glass of milk!

Hickory Ridge Farm Dairy

(Successor to Weinberg Dairy)
Stockbridge Mich. Phone (517) 851-3000

An important message for people who prepare their own income tax returns.

Maybe you've been cheating yourself all these years.

Every year, between January and April, millions of people sit down to do battle with Uncle Sam. Some are "self styled" accountants. Others think they can save a few dollars doing it themselves—so why not.

The sad truth is, however, no matter what their reason was for starting, many of them end the same. On the short end.

You see, when it comes to income taxes, amateurs should depend on H&R Block. We have all the facilities to help you make "income tax time" a pleasant experience. To begin with, H&R Block now has over 6,000 conveniently located offices manned by thousands of specially trained personnel who are anxious to help you. They'll sit you down over a free cup of coffee and show you some things about your income tax that you might never have known existed. For example, do you know



all about deductions for child care or casualty losses? And maybe you aren't aware that if your income increased last year, you may be able to save tax dollars by "income averaging."

Well, when it comes to income taxes, H&R Block is aware of just about everything because we're a company that eats, sleeps, and drinks tax returns 365 days a year.

Yes, maybe you can save a couple of bucks by doing your own return but it really may be costing you a lot more by not having your return done by H&R Block.

DON'T LET AN AMATEUR DO HAR BLOCK'S JOB.

H&R Block.

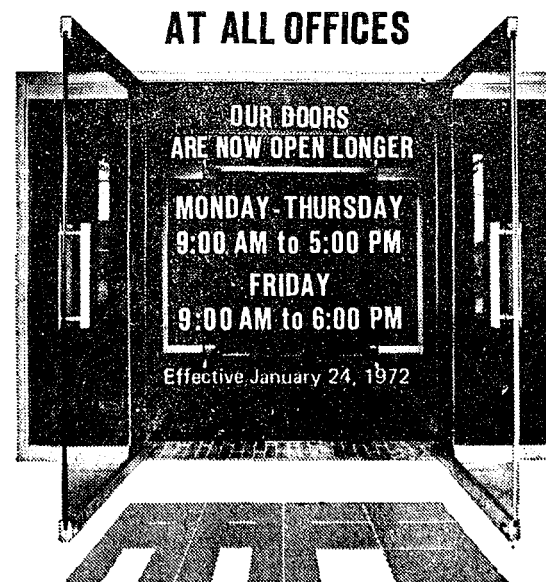
The income tax people.

105 N. Main St., Chelsea
Phone 475-2752

OFFICE HOURS:
9 a.m.-6 p.m. Mon. thru Sat.
No Appointment Necessary
Open Today!

ANN ARBOR FEDERAL SAVINGS ANNOUNCES ITS NEW OPEN DOOR POLICY

AT ALL OFFICES



Besides longer hours you get higher interest rates at Ann Arbor Federal Savings—up to 6% annual rate on passbook certificate accounts. This is an effective annual rate of 6.13% with 3, 4, or 5 years maturity in amounts of \$5,000 or more. Get the edge at the Federal Savings and Loan.

6%

Annual rate

PASSBOOK CERTIFICATE ACCOUNTS
Three, Four, or Five Years
Maturity in Amounts of \$5,000 or More

the savings specialists
Liberty at Division, West Stadium at Padua,
Huron Parkway at East, Plymouth at Nixon, Chelsea

ANN ARBOR FEDERAL SAVINGS

Member: Federal Loan Bank System • Federal Savings and Loan Insurance Corporation